



HECAM Polyclonal Antibody

Catalog No	BYab-07236
Isotype	IgG
Reactivity	Human;Mouse
Applications	WB;ELISA
Gene Name	HEPACAM
Protein Name	Hepatocyte cell adhesion molecule (Protein hepaCAM)
Immunogen	Synthesized peptide derived from human protein . at AA range: 10-90
Specificity	HECAM Polyclonal Antibody detects endogenous levels of protein.
Formulation	Liquid in PBS containing 50% glycerol, and 0.02% sodium azide.
Source	Polyclonal, Rabbit,IgG
Purification	The antibody was affinity-purified from rabbit antiserum by affinity-chromatography using epitope-specific immunogen.
Dilution	WB 1:500-2000 ELISA 1:5000-20000
Concentration	1 mg/ml
Purity	≥90%
Storage Stability	-20°C/1 year
Synonyms	
Observed Band	45kD
Cell Pathway	Cytoplasm . Membrane; Single-pass type I membrane protein; Cytoplasmic side . In MCF-7 breast carcinoma and hepatic Hep 3B2.1-7 and Hep-G2 cell lines, localization of HEPACAM is cell density-dependent. In well spread cells, localized to punctate structures in the perinuclear membrane, cytoplasm, and at cell surface of protusions. In confluent cells, localized predominantly to the cytoplasmic membrane, particularly in areas of cell-cell contacts. Colocalizes with CDH1.
Tissue Specificity	Brain,Fetal brain,Hypothalamus,Liver,
Function	caution:Product of a dubious CDS prediction. Encoded by the 3'-UTR of HEPACAM.,domain:The cytoplasmic domain plays an important role in regulation of cell-matrix adhesion and cell motility.,function:Involved in regulating cell motility and cell-matrix interactions. May inhibit cell growth through suppression of cell proliferation.,induction:Down-regulated in 20 out of 23 of hepatocellular carcinoma (HCC) samples and is undetectable in 5 HCC cell lines tested.,PTM:N-glycosylated.,similarity:Contains 1 Ig-like C2-type

Nanjing BYabscience technology Co.,Ltd



(immunoglobulin-like) domain.,similarity:Contains 1 Ig-like V-type (immunoglobulin-like) domain.,subcellular location:In MCF7 breast carcinoma and hepatic Hep3B and HepG2 cell lines, localization of HEPACAM is cell density-dependent. In well spread cells, localized to punctate structures in the perinuclear membrane, cytoplasm, and at cell surface of protusions. In confluent c

Background

The protein encoded by this gene is a single-pass type I membrane protein that localizes to the cytoplasmic side of the cell membrane. The encoded protein acts as a homodimer and is involved in cell motility and cell-matrix interactions. The expression of this gene is downregulated or undetectable in many cancer cell lines, so this may be a tumor suppressor gene. [provided by RefSeq, Jul 2011],

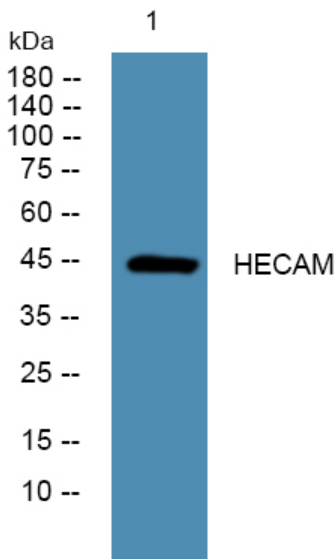
matters needing attention

Avoid repeated freezing and thawing!

Usage suggestions

This product can be used in immunological reaction related experiments. For more information, please consult technical personnel.

Products Images



Western blot analysis of lysates from HCT116 cells, primary antibody was diluted at 1:1000, 4° over night