



FCN3 Polyclonal Antibody

| | |
|---------------------------|---|
| Catalog No | BYab-07225 |
| Isotype | IgG |
| Reactivity | Human;Rat;Mouse; |
| Applications | WB;ELISA |
| Gene Name | FCN3 FCNH HAKA1 |
| Protein Name | Ficolin-3 (Collagen/fibrinogen domain-containing lectin 3 p35) (Collagen/fibrinogen domain-containing protein 3) (Hakata antigen) |
| Immunogen | Synthesized peptide derived from human protein . at AA range: 130-210 |
| Specificity | FCN3 Polyclonal Antibody detects endogenous levels of protein. |
| Formulation | Liquid in PBS containing 50% glycerol, and 0.02% sodium azide. |
| Source | Polyclonal, Rabbit,IgG |
| Purification | The antibody was affinity-purified from rabbit antiserum by affinity-chromatography using epitope-specific immunogen. |
| Dilution | WB 1:500-2000 ELISA 1:5000-20000 |
| Concentration | 1 mg/ml |
| Purity | ≥90% |
| Storage Stability | -20°C/1 year |
| Synonyms | |
| Observed Band | 32kD |
| Cell Pathway | Secreted. Found in blood plasma, bronchus, alveolus and bile duct. |
| Tissue Specificity | Liver and lung. In liver it is produced by bile duct epithelial cells and hepatocytes. In lung it is produced by both ciliated bronchial epithelial cells and type II alveolar epithelial cells. |
| Function | disease:Antigen found 14 times more frequently in the serum of patients with systemic lupus erythematosus (SLE) than in patients with other autoimmune diseases.,function:May function in innate immunity through activation of the lectin complement pathway. Calcium-dependent and GlcNAc-binding lectin. Has affinity with GalNAc, GlcNAc, D-fucose, as mono/oligosaccharide and lipopolysaccharides from S.typhimurium and S.minnesota.,PTM:The N-terminus is blocked.,similarity:Belongs to the ficolin lectin family.,similarity:Contains 1 collagen-like domain.,similarity:Contains 1 fibrinogen C-terminal domain.,subcellular location:Found in blood plasma, bronchus, alveolus and bile duct.,subunit:Homopolymer; disulfide-linked. May be an octadecamer consisting |

Nanjing BYabscience technology Co.,Ltd



of an elementary trimer unit. Does not interact with fibronectin, elastin or zymosan. Interacts with MASP1 and MASP2.,tissue specificity:Liver and

Background

ficolin 3(FCN3) Homo sapiens Ficolins are a group of proteins which consist of a collagen-like domain and a fibrinogen-like domain. In human serum, there are two types of ficolins, both of which have lectin activity. The protein encoded by this gene is a thermolabile beta-2-macroglycoprotein found in all human serum and is a member of the ficolin/opsonin p35 lectin family. The protein, which was initially identified based on its reactivity with sera from patients with systemic lupus erythematosus, has been shown to have a calcium-independent lectin activity. The protein can activate the complement pathway in association with MASPs and sMAP, thereby aiding in host defense through the activation of the lectin pathway. Alternative splicing occurs at this locus and two variants, each encoding a distinct isoform, have been identified. [provided by RefSeq, Jul 2008],

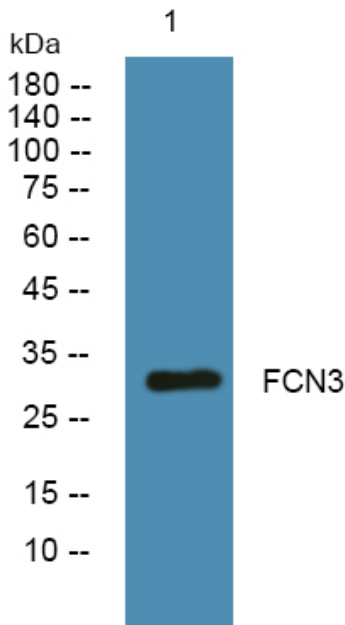
matters needing attention

Avoid repeated freezing and thawing!

Usage suggestions

This product can be used in immunological reaction related experiments. For more information, please consult technical personnel.

Products Images



Nanjing BYabscience technology Co.,Ltd