



EGFL7 Polyclonal Antibody

Catalog No	BYab-07218
Isotype	IgG
Reactivity	Human;Rat;Mouse
Applications	WB;ELISA
Gene Name	EGFL7 MEGF7 UNQ187/PRO1449
Protein Name	Epidermal growth factor-like protein 7 (EGF-like protein 7) (Multiple epidermal growth factor-like domains protein 7) (Multiple EGF-like domains protein 7) (NOTCH4-like protein) (Vascular endothelial
Immunogen	Synthesized peptide derived from human protein . at AA range: 140-220
Specificity	EGFL7 Polyclonal Antibody detects endogenous levels of protein.
Formulation	Liquid in PBS containing 50% glycerol, and 0.02% sodium azide.
Source	Polyclonal, Rabbit,IgG
Purification	The antibody was affinity-purified from rabbit antiserum by affinity-chromatography using epitope-specific immunogen.
Dilution	WB 1:500-2000 ELISA 1:5000-20000
Concentration	1 mg/ml
Purity	≥90%
Storage Stability	-20°C/1 year
Synonyms	
Observed Band	30kD
Cell Pathway	Secreted, extracellular space .
Tissue Specificity	Brain,Kidney,Ovary,Uterus,
Function	function:Regulates vascular tubulogenesis in vivo. Inhibits platelet-derived growth factor (PDGF)-BB-induced smooth muscle cell migration and promotes endothelial cells adhesion to the substrate in vitro.,similarity:Contains 1 EMI domain.,similarity:Contains 2 EGF-like domains.,
Background	This gene encodes a secreted endothelial cell protein that contains two epidermal growth factor-like domains. The encoded protein may play a role in regulating vasculogenesis. This protein may be involved in the growth and proliferation of tumor cells. Alternate splicing results in multiple transcript variants. [provided by RefSeq, Feb 2012],

Nanjing BYabscience technology Co.,Ltd



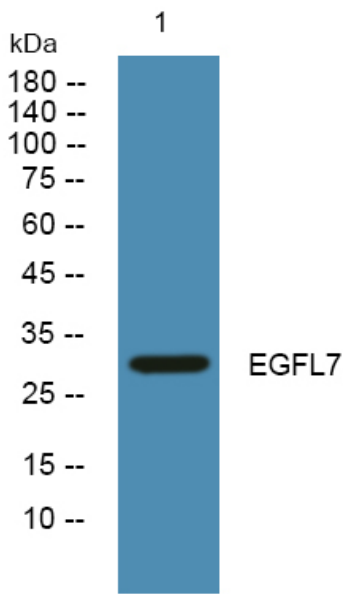
matters needing attention

Avoid repeated freezing and thawing!

Usage suggestions

This product can be used in immunological reaction related experiments. For more information, please consult technical personnel.

Products Images



Western blot analysis of lysates from A431 cells, primary antibody was diluted at 1:1000, 4° over night