



TRML1 Polyclonal Antibody

Catalog No	BYab-07217
Isotype	IgG
Reactivity	Human;Mouse
Applications	WB;ELISA
Gene Name	TREML1 TLT1 UNQ1825/PRO3438
Protein Name	Trem-like transcript 1 protein (TLT-1) (Triggering receptor expressed on myeloid cells-like protein 1)
Immunogen	Synthesized peptide derived from human protein . at AA range: 30-110
Specificity	TRML1 Polyclonal Antibody detects endogenous levels of protein.
Formulation	Liquid in PBS containing 50% glycerol, and 0.02% sodium azide.
Source	Polyclonal, Rabbit,IgG
Purification	The antibody was affinity-purified from rabbit antiserum by affinity-chromatography using epitope-specific immunogen.
Dilution	WB 1:500-2000 ELISA 1:5000-20000
Concentration	1 mg/ml
Purity	≥90%
Storage Stability	-20°C/1 year
Synonyms	
Observed Band	34kD
Cell Pathway	Cell membrane ; Single-pass type I membrane protein . Cytoplasm . Sequestered in cytoplasmic vesicles in resting platelets (PubMed:15100151). Transported to the cell surface after stimulation by thrombin (PubMed:15100151). Soluble fragments can be released into the serum by proteolysis (PubMed:16505478).
Tissue Specificity	Detected in platelets, monocytic leukemia and in T-cell leukemia.
Function	function:Cell surface receptor that may play a role in the innate and adaptive immune response.,PTM:Phosphorylated on tyrosine residues.,similarity:Contains 1 Ig-like V-type (immunoglobulin-like) domain.,subcellular location:Sequestered in cytoplasmic vesicles in resting platelets. Transported to the cell surface after stimulation by thrombin. Soluble fragments can be released into the serum by proteolysis.,subunit:When phosphorylated, interacts with PTPN6 (By similarity). When phosphorylated, interacts with PTPN11.,tissue specificity:Detected in platelets, monocytic leukemia and in T-cell leukemia.,

Nanjing BYabscience technology Co.,Ltd



Background

This gene encodes a member of the triggering receptor expressed on myeloid cells-like (TREM) family. The encoded protein is a type 1 single Ig domain orphan receptor localized to the alpha-granule membranes of platelets. The encoded protein is involved in platelet aggregation, inflammation, and cellular activation and has been linked to Gray platelet syndrome. Alternative splicing results in multiple transcript variants [provided by RefSeq, Nov 2012],

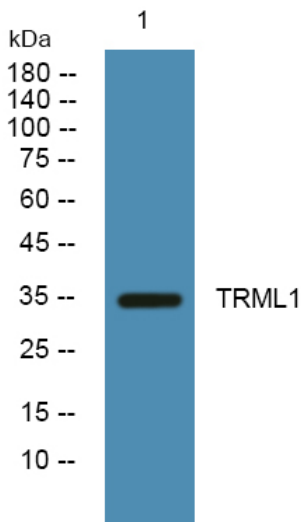
matters needing attention

Avoid repeated freezing and thawing!

Usage suggestions

This product can be used in immunological reaction related experiments. For more information, please consult technical personnel.

Products Images



Western blot analysis of lysates from DU145 cells, primary antibody was diluted at 1:1000, 4° over night