



SLAF8 Polyclonal Antibody

Catalog No	BYab-07210
Isotype	IgG
Reactivity	Human;Mouse
Applications	WB;ELISA
Gene Name	SLAMF8 BLAME
Protein Name	SLAM family member 8 (B-lymphocyte activator macrophage expressed) (BCM-like membrane protein) (CD antigen CD353)
Immunogen	Synthesized peptide derived from human protein . at AA range: 110-190
Specificity	SLAF8 Polyclonal Antibody detects endogenous levels of protein.
Formulation	Liquid in PBS containing 50% glycerol, and 0.02% sodium azide.
Source	Polyclonal, Rabbit,IgG
Purification	The antibody was affinity-purified from rabbit antiserum by affinity-chromatography using epitope-specific immunogen.
Dilution	WB 1:500-2000 ELISA 1:5000-20000
Concentration	1 mg/ml
Purity	≥90%
Storage Stability	-20°C/1 year
Synonyms	
Observed Band	31kD
Cell Pathway	Membrane; Single-pass type I membrane protein.
Tissue Specificity	Expressed in lymph node, spleen, thymus and bone marrow.
Function	function:May play a role in B-lineage commitment and/or modulation of signaling through the B-cell receptor.,similarity:Contains 1 Ig-like C2-type (immunoglobulin-like) domain.,tissue specificity:Expressed in lymph node, spleen, thymus and bone marrow.,
Background	This gene encodes a member of the CD2 family of cell surface proteins involved in lymphocyte activation. These proteins are characterized by Ig domains. This protein is expressed in lymphoid tissues, and studies of a similar protein in mouse suggest that it may function during B cell lineage commitment. The gene is found in a region of chromosome 1 containing many CD2 genes. [provided by RefSeq, Jul 2008],

Nanjing BYabscience technology Co.,Ltd



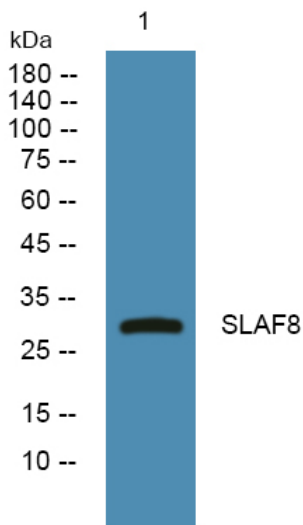
matters needing attention

Avoid repeated freezing and thawing!

Usage suggestions

This product can be used in immunological reaction related experiments. For more information, please consult technical personnel.

Products Images



Western blot analysis of lysates from PC12 cells, primary antibody was diluted at 1:1000, 4° over night