



IGS11 Polyclonal Antibody

Catalog No	BYab-07187
Isotype	IgG
Reactivity	Human;Rat;Mouse
Applications	WB;ELISA
Gene Name	IGSF11 BTIGSF CXADRL1 VSIG3
Protein Name	Immunoglobulin superfamily member 11 (IgSF11) (Brain and testis-specific immunoglobulin superfamily protein) (Bt-IGSF) (V-set and immunoglobulin domain-containing protein 3)
Immunogen	Synthesized peptide derived from human protein . at AA range: 110-190
Specificity	IGS11 Polyclonal Antibody detects endogenous levels of protein.
Formulation	Liquid in PBS containing 50% glycerol, and 0.02% sodium azide.
Source	Polyclonal, Rabbit,IgG
Purification	The antibody was affinity-purified from rabbit antiserum by affinity-chromatography using epitope-specific immunogen.
Dilution	WB 1:500-2000 ELISA 1:5000-20000
Concentration	1 mg/ml
Purity	≥90%
Storage Stability	-20°C/1 year
Synonyms	
Observed Band	47kD
Cell Pathway	Cell membrane ; Single-pass type I membrane protein .
Tissue Specificity	Abundantly expressed in testis and ovary and to a lower extent in brain, kidney and skeletal muscle.
Function	function:Functions as a cell adhesion molecule through homophilic interaction. Stimulates cell growth.,miscellaneous:The last 20 cytoplasmic amino-acids are not required for the cell adhesion function.,PTM:N-glycosylated.,similarity:Contains 1 Ig-like C2-type (immunoglobulin-like) domain.,similarity:Contains 1 Ig-like V-type (immunoglobulin-like) domain.,tissue specificity:Abundantly expressed in testis and ovary and to a lower extent in brain, kidney and skeletal muscle.,
Background	IGSF11 is an immunoglobulin (Ig) superfamily member that is preferentially expressed in brain and testis. It shares significant homology with coxsackievirus and adenovirus receptor (CXADR; MIM 602621) and endothelial cell-selective

Nanjing BYabscience technology Co.,Ltd



adhesion molecule (ESAM).[supplied by OMIM, Apr 2005],

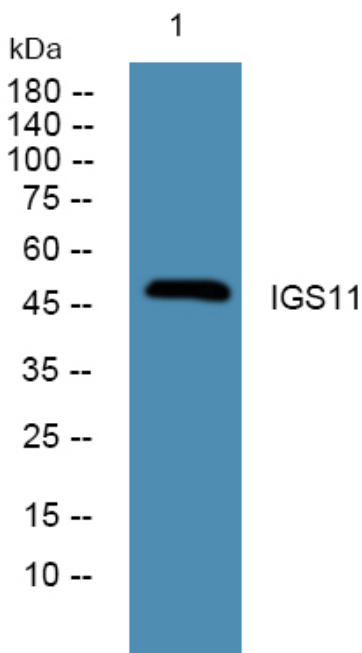
matters needing attention

Avoid repeated freezing and thawing!

Usage suggestions

This product can be used in immunological reaction related experiments. For more information, please consult technical personnel.

Products Images



Western blot analysis of lysates from KB cells, primary antibody was diluted at 1:1000, 4° over night