



MYCL1 Polyclonal Antibody

| | |
|----------------------------------|-----------------------------------------------------------------------------------------------------------------------------------------------------------------------------------|
| Catalog No | BYab-07184 |
| Isotype | IgG |
| Reactivity | Human;Mouse |
| Applications | WB;ELISA |
| Gene Name | MYCL1 BHLHE38 LMYC MYCL |
| Protein Name | Protein L-Myc-1 (Class E basic helix-loop-helix protein 38) (bHLHe38) |
| Immunogen | Synthesized peptide derived from human protein . at AA range: 170-250 |
| Specificity | MYCL1 Polyclonal Antibody detects endogenous levels of protein. |
| Formulation | Liquid in PBS containing 50% glycerol, and 0.02% sodium azide. |
| Source | Polyclonal, Rabbit,IgG |
| Purification | The antibody was affinity-purified from rabbit antiserum by affinity-chromatography using epitope-specific immunogen. |
| Dilution | WB 1:500-2000 ELISA 1:5000-20000 |
| Concentration | 1 mg/ml |
| Purity | ≥90% |
| Storage Stability | -20°C/1 year |
| Synonyms | |
| Observed Band | 40kD |
| Cell Pathway | Nucleus . |
| Tissue Specificity | Placenta, |
| Function | similarity:Contains 1 basic helix-loop-helix (bHLH) domain.,subunit:Efficient DNA binding requires dimerization with another bHLH protein. Binds DNA as an heterodimer with MAX., |
| Background | similarity:Contains 1 basic helix-loop-helix (bHLH) domain.,subunit:Efficient DNA binding requires dimerization with another bHLH protein. Binds DNA as an heterodimer with MAX., |
| matters needing attention | Avoid repeated freezing and thawing! |

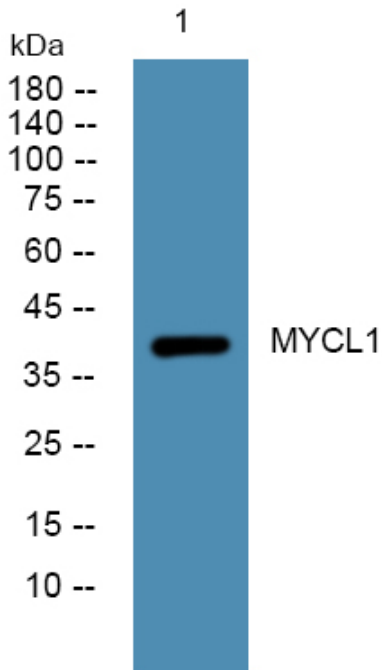
Nanjing BYabscience technology Co.,Ltd



Usage suggestions

This product can be used in immunological reaction related experiments. For more information, please consult technical personnel.

Products Images



Western blot analysis of lysates from SH-SY5Y cells, primary antibody was diluted at 1:1000, 4° over night