



SPY4 Polyclonal Antibody

Catalog No	BYab-07180
Isotype	IgG
Reactivity	Human;Mouse
Applications	WB;ELISA
Gene Name	SPRY4
Protein Name	Protein sprouty homolog 4 (Spry-4)
Immunogen	Synthesized peptide derived from human protein . at AA range: 230-310
Specificity	SPY4 Polyclonal Antibody detects endogenous levels of protein.
Formulation	Liquid in PBS containing 50% glycerol, and 0.02% sodium azide.
Source	Polyclonal, Rabbit,IgG
Purification	The antibody was affinity-purified from rabbit antiserum by affinity-chromatography using epitope-specific immunogen.
Dilution	WB 1:500-2000 ELISA 1:5000-20000
Concentration	1 mg/ml
Purity	≥90%
Storage Stability	-20°C/1 year
Synonyms	
Observed Band	32kD
Cell Pathway	Cytoplasm . Cell projection, ruffle membrane ; Peripheral membrane protein ; Cytoplasmic side . Found in the cytoplasm in unstimulated cells but is translocated to the membrane ruffles in cells stimulated with EGF (epidermal growth factor) (By similarity). Colocalizes with TESK1 in vesicular spots in the cytoplasm (PubMed:15584898). .
Tissue Specificity	Brain,Umbilical artery,
Function	domain:The Cys-rich domain is responsible for the localization of the protein to the membrane ruffles.,function:Suppresses the insulin receptor and EGFR-transduced MAPK signaling pathway, but does not inhibit MAPK activation by a constitutively active mutant Ras. Probably impairs the formation of GTP-Ras.,similarity:Belongs to the sprouty family.,similarity:Contains 1 SPR (sprouty) domain.,subunit:Interacts with the C-terminus of TESK1.,
Background	This gene encodes a member of a family of cysteine- and proline-rich proteins. The encoded protein is an inhibitor of the receptor-transduced mitogen-activated

Nanjing BYabscience technology Co.,Ltd



protein kinase (MAPK) signaling pathway. Activity of this protein impairs the formation of active GTP-RAS. Nucleotide variation in this gene has been associated with hypogonadotropic hypogonadism 17 with or without anosmia. Alternative splicing results in a multiple transcript variants. [provided by RefSeq, Jun 2014],

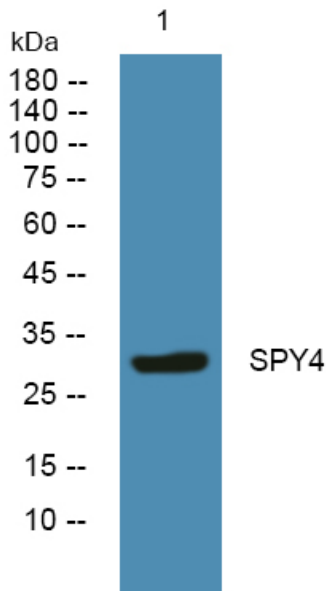
matters needing attention

Avoid repeated freezing and thawing!

Usage suggestions

This product can be used in immunological reaction related experiments. For more information, please consult technical personnel.

Products Images



Western blot analysis of lysates from U2OS cells, primary antibody was diluted at 1:1000, 4° over night