



VSIG1 Polyclonal Antibody

Catalog No	BYab-07179
Isotype	IgG
Reactivity	Human;Rat;Mouse
Applications	WB;ELISA
Gene Name	VSIG1 GPA34
Protein Name	V-set and immunoglobulin domain-containing protein 1 (Cell surface A33 antigen) (Glycoprotein A34)
Immunogen	Synthesized peptide derived from human protein . at AA range: 1-80
Specificity	VSIG1 Polyclonal Antibody detects endogenous levels of protein.
Formulation	Liquid in PBS containing 50% glycerol, and 0.02% sodium azide.
Source	Polyclonal, Rabbit,IgG
Purification	The antibody was affinity-purified from rabbit antiserum by affinity-chromatography using epitope-specific immunogen.
Dilution	WB 1:500-2000 ELISA 1:5000-20000
Concentration	1 mg/ml
Purity	≥90%
Storage Stability	-20°C/1 year
Synonyms	
Observed Band	42kD
Cell Pathway	Membrane ; Single-pass type I membrane protein .
Tissue Specificity	Detected only in stomach mucosa and testis, and to a much lesser level in pancreas (at protein level). Detected in gastric cancers (31%), esophageal carcinomas (50%) and ovarian cancers (23%).
Function	PTM:Highly N-glycosylated. Appears not to contain significant amounts of O-linked carbohydrates or sialic acid in its sugar moieties.,similarity:Contains 1 Ig-like C2-type (immunoglobulin-like) domain.,similarity:Contains 1 Ig-like V-type (immunoglobulin-like) domain.,tissue specificity:Detected only in stomach mucosa and testis, and to a much lesser lever in pancreas (at protein level). Detected in gastric cancers (31%), esophageal carcinomas (50%) and ovarian cancers (23%).,
Background	This gene encodes a member of the junctional adhesion molecule (JAM) family. The encoded protein contains multiple glycosylation sites at the N-terminal region, and multiple phosphorylation sites and glutamic acid/proline (EP) repeats at the

Nanjing BYabscience technology Co.,Ltd



C-terminal region. The gene is expressed in normal stomach and testis, as well as in gastric, esophageal and ovarian cancers. Alternatively spliced transcript variants encoding different isoforms have been found for this gene. [provided by RefSeq, Dec 2009],

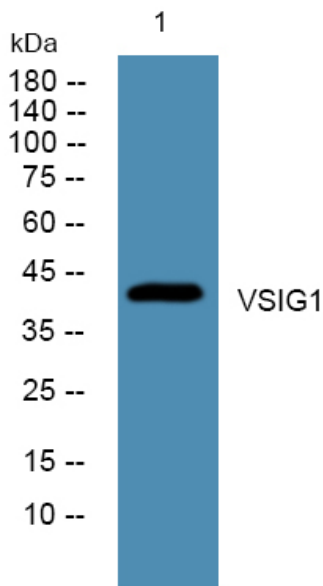
matters needing attention

Avoid repeated freezing and thawing!

Usage suggestions

This product can be used in immunological reaction related experiments. For more information, please consult technical personnel.

Products Images



Western blot analysis of lysates from A431 cells, primary antibody was diluted at 1:1000, 4° over night