



# STC2 Polyclonal Antibody

<b>Catalog No</b>	BYab-07155
<b>Isotype</b>	IgG
<b>Reactivity</b>	Human;Rat;Mouse
<b>Applications</b>	WB;ELISA
<b>Gene Name</b>	STC2
<b>Protein Name</b>	Stanniocalcin-2 (STC-2) (Stanniocalcin-related protein) (STC-related protein) (STCRP)
<b>Immunogen</b>	Synthesized peptide derived from human protein . at AA range: 170-250
<b>Specificity</b>	STC2 Polyclonal Antibody detects endogenous levels of protein.
<b>Formulation</b>	Liquid in PBS containing 50% glycerol, and 0.02% sodium azide.
<b>Source</b>	Polyclonal, Rabbit,IgG
<b>Purification</b>	The antibody was affinity-purified from rabbit antiserum by affinity-chromatography using epitope-specific immunogen.
<b>Dilution</b>	WB 1:500-2000 ELISA 1:5000-20000
<b>Concentration</b>	1 mg/ml
<b>Purity</b>	≥90%
<b>Storage Stability</b>	-20°C/1 year
<b>Synonyms</b>	
<b>Observed Band</b>	33kD
<b>Cell Pathway</b>	Secreted .
<b>Tissue Specificity</b>	Expressed in a variety of tissues including muscle, heart, pancreas, kidney, spleen, prostate, small intestine, colon and peripheral blood leukocytes.
<b>Function</b>	function:Has an anti-hypocalcemic action on calcium and phosphate homeostasis.,similarity:Belongs to the stanniocalcin family.,subunit:Homodimer; disulfide-linked.,tissue specificity:Expressed in a variety of tissues including muscle, heart, pancreas, kidney, spleen, prostate, small intestine, colon and peripheral blood Leucocytes.,
<b>Background</b>	This gene encodes a secreted, homodimeric glycoprotein that is expressed in a wide variety of tissues and may have autocrine or paracrine functions. The encoded protein has 10 of its 15 cysteine residues conserved among stanniocalcin family members and is phosphorylated by casein kinase 2 exclusively on its serine residues. Its C-terminus contains a cluster of histidine residues which may interact with metal ions. The protein may play a role in the

Nanjing BYabscience technology Co.,Ltd



regulation of renal and intestinal calcium and phosphate transport, cell metabolism, or cellular calcium/phosphate homeostasis. Constitutive overexpression of human stanniocalcin 2 in mice resulted in pre- and postnatal growth restriction, reduced bone and skeletal muscle growth, and organomegaly. Expression of this gene is induced by estrogen and altered in some breast cancers. [provided by RefSeq, Jul 2008],

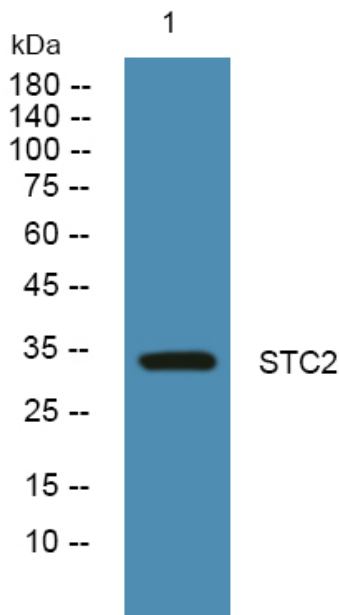
**matters needing attention**

Avoid repeated freezing and thawing!

**Usage suggestions**

This product can be used in immunological reaction related experiments. For more information, please consult technical personnel.

## Products Images



Western blot analysis of lysates from SH-SY5Y cells, primary antibody was diluted at 1:1000, 4° over night