



PLXD1 Polyclonal Antibody

Catalog No	BYab-07151
Isotype	IgG
Reactivity	Human;Mouse
Applications	WB;ELISA
Gene Name	PLXND1 KIAA0620
Protein Name	Plexin-D1
Immunogen	Synthesized peptide derived from human protein . at AA range: 170-250
Specificity	PLXD1 Polyclonal Antibody detects endogenous levels of protein.
Formulation	Liquid in PBS containing 50% glycerol, and 0.02% sodium azide.
Source	Polyclonal, Rabbit,IgG
Purification	The antibody was affinity-purified from rabbit antiserum by affinity-chromatography using epitope-specific immunogen.
Dilution	WB 1:500-2000 ELISA 1:5000-20000
Concentration	1 mg/ml
Purity	≥90%
Storage Stability	-20°C/1 year
Synonyms	
Observed Band	211kD
Cell Pathway	Cell membrane ; Single-pass membrane protein . Cell projection, lamellipodium membrane .
Tissue Specificity	Detected at low levels in heart, placenta, lung, skeletal muscle, kidney, thymus and liver. Detected at very low levels in brain, colon, spleen, small intestine and peripheral blood leukocytes.
Function	similarity:Belongs to the plexin family.,similarity:Contains 1 Sema domain.,similarity:Contains 3 IPT/TIG domains.,tissue specificity:Detected at low levels in heart, placenta, lung, skeletal muscle, kidney, thymus and liver. Detected at very low levels in brain, colon, spleen, small intestine and peripheral blood leukocytes.,
Background	similarity:Belongs to the plexin family.,similarity:Contains 1 Sema domain.,similarity:Contains 3 IPT/TIG domains.,tissue specificity:Detected at low levels in heart, placenta, lung, skeletal muscle, kidney, thymus and liver. Detected at very low levels in brain, colon, spleen, small intestine and peripheral blood leukocytes.,

Nanjing BYabscience technology Co.,Ltd



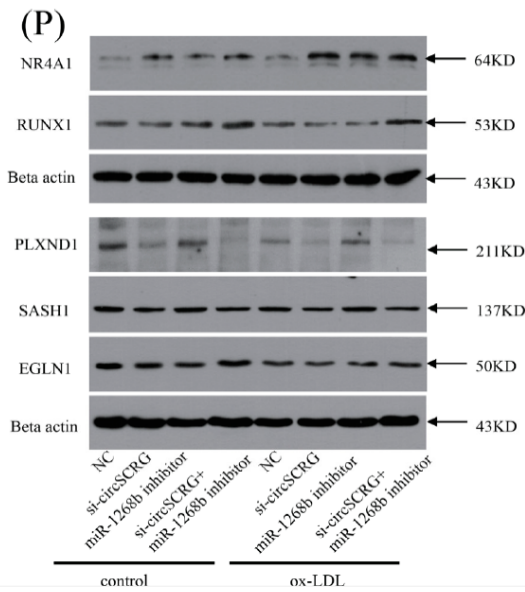
matters needing attention

Avoid repeated freezing and thawing!

Usage suggestions

This product can be used in immunological reaction related experiments. For more information, please consult technical personnel.

Products Images



Identification of a Novel Angiogenesis Signalling circSCRG1/miR-1268b/NR4A1 Pathway in Atherosclerosis and the Regulatory Effects of TMP-PF In Vitro MOLECULES Rong Yuan, Qiqi Xin, Xiaochang Ma, Meng Yu, Yu Miao, Keji Chen, Weihong Cong WB Human human umbilical vein endothelial cells (HUVECs)