



# TRY2 Polyclonal Antibody

<b>Catalog No</b>	BYab-07138
<b>Isotype</b>	IgG
<b>Reactivity</b>	Human;Rat;Mouse
<b>Applications</b>	WB;ELISA
<b>Gene Name</b>	PRSS2 TRY2 TRYP2
<b>Protein Name</b>	Trypsin-2 (EC 3.4.21.4) (Anionic trypsinogen) (Serine protease 2) (Trypsin II)
<b>Immunogen</b>	Synthesized peptide derived from human protein . at AA range: 40-120
<b>Specificity</b>	TRY2 Polyclonal Antibody detects endogenous levels of protein.
<b>Formulation</b>	Liquid in PBS containing 50% glycerol, and 0.02% sodium azide.
<b>Source</b>	Polyclonal, Rabbit,IgG
<b>Purification</b>	The antibody was affinity-purified from rabbit antiserum by affinity-chromatography using epitope-specific immunogen.
<b>Dilution</b>	WB 1:500-2000 ELISA 1:5000-20000
<b>Concentration</b>	1 mg/ml
<b>Purity</b>	≥90%
<b>Storage Stability</b>	-20°C/1 year
<b>Synonyms</b>	
<b>Observed Band</b>	27kD
<b>Cell Pathway</b>	Secreted, extracellular space.
<b>Tissue Specificity</b>	Expressed in Paneth cells, at the base of small intestinal crypts.
<b>Function</b>	catalytic activity:Preferential cleavage: Arg- -Xaa, Lys- -Xaa.,cofactor:Binds 1 calcium ion per subunit.,PTM:Sulfated on tyrosine.,similarity:Belongs to the peptidase S1 family.,similarity:Contains 1 peptidase S1 domain.,
<b>Background</b>	This gene belongs to the trypsin family of serine proteases and encodes anionic trypsinogen. It is part of a cluster of trypsinogen genes that are located within the T cell receptor beta locus. Enzymes of this family cleave peptide bonds that follow lysine or arginine residues. This protein is found at high levels in pancreatic juice and its upregulation is a characteristic feature of pancreatitis. This protein has also been found to activate pro-urokinase in ovarian tumors, suggesting a function in tumor invasion. In addition, this enzyme is able to cleave across the type II collagen triple helix in rheumatoid arthritis synovitis tissue, potentially participating

Nanjing BYabscience technology Co.,Ltd



in the degradation of type II collagen-rich cartilage matrix. Alternative splicing results in multiple transcript variants.[provided by RefSeq, Jan 2015],

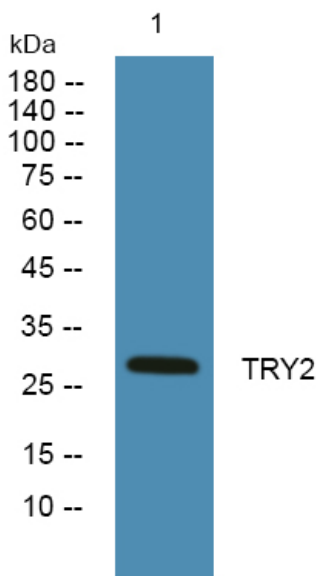
**matters needing attention**

Avoid repeated freezing and thawing!

**Usage suggestions**

This product can be used in immunological reaction related experiments. For more information, please consult technical personnel.

## Products Images



Western blot analysis of lysates from PC12 cells, primary antibody was diluted at 1:1000, 4° over night