



TBX6 Polyclonal Antibody

Catalog No	BYab-07134
Isotype	IgG
Reactivity	Human;Rat;Mouse
Applications	WB;ELISA
Gene Name	TBX6
Protein Name	T-box transcription factor TBX6 (T-box protein 6)
Immunogen	Synthesized peptide derived from human protein . at AA range: 230-310
Specificity	TBX6 Polyclonal Antibody detects endogenous levels of protein.
Formulation	Liquid in PBS containing 50% glycerol, and 0.02% sodium azide.
Source	Polyclonal, Rabbit,IgG
Purification	The antibody was affinity-purified from rabbit antiserum by affinity-chromatography using epitope-specific immunogen.
Dilution	WB 1:500-2000 ELISA 1:5000-20000
Concentration	1 mg/ml
Purity	≥90%
Storage Stability	-20°C/1 year
Synonyms	
Observed Band	47kD
Cell Pathway	Nucleus .
Tissue Specificity	Expressed in fetal tail bud, posterior spinal tissue, intervertebral disk and testis. Also expressed in adult testis, kidney, lung, muscle and thymus.
Function	developmental stage:Expressed during gastrulation and during a second phase in some adult tissues.,function:Probable transcriptional regulator involved in developmental processes. Could be required for specification of paraxial mesoderm structures during gastrulation.,similarity:Contains 1 T-box DNA-binding domain.,subunit:Forms a dimeric complex with DNA (in vitro).,tissue specificity:Expressed in fetal tail bud, posterior spinal tissue, intervertebral disk and testis. Also expressed in adult testis, kidney, lung, muscle and thymus.,
Background	This gene is a member of a phylogenetically conserved family of genes that share a common DNA-binding domain, the T-box. T-box genes encode transcription factors involved in the regulation of developmental processes. Knockout studies in mice indicate that this gene is important for specification of

Nanjing BYabscience technology Co.,Ltd



paraxial mesoderm structures. [provided by RefSeq, Aug 2008],

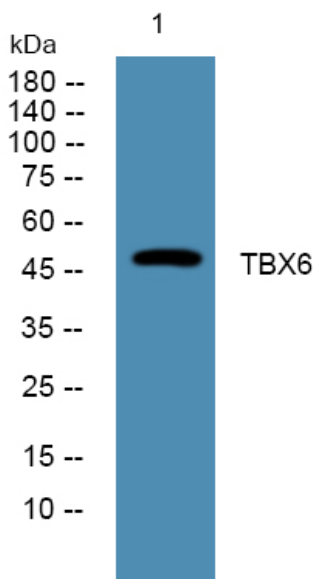
matters needing attention

Avoid repeated freezing and thawing!

Usage suggestions

This product can be used in immunological reaction related experiments. For more information, please consult technical personnel.

Products Images



Western blot analysis of lysates from KB cells, primary antibody was diluted at 1:1000, 4° over night