



R4RL2 Polyclonal Antibody

Catalog No	BYab-07130
Isotype	IgG
Reactivity	Human;Rat;Mouse
Applications	WB;ELISA
Gene Name	RTN4RL2 NGRH1 NGRL3
Protein Name	Reticulon-4 receptor-like 2 (Nogo receptor-like 3) (Nogo-66 receptor homolog 1) (Nogo-66 receptor-related protein 2) (NgR2)
Immunogen	Synthesized peptide derived from human protein . at AA range: 290-370
Specificity	R4RL2 Polyclonal Antibody detects endogenous levels of protein.
Formulation	Liquid in PBS containing 50% glycerol, and 0.02% sodium azide.
Source	Polyclonal, Rabbit,IgG
Purification	The antibody was affinity-purified from rabbit antiserum by affinity-chromatography using epitope-specific immunogen.
Dilution	WB 1:500-2000 ELISA 1:5000-20000
Concentration	1 mg/ml
Purity	≥90%
Storage Stability	-20°C/1 year
Synonyms	
Observed Band	46kD
Cell Pathway	Cell membrane ; Lipid-anchor, GPI-anchor . Membrane raft . Cell projection, dendrite . Perikaryon . Cell projection, axon . Localized to the surface of neurons, including axons. Detected close to synapses, but is excluded from synapses. .
Tissue Specificity	Highly expressed in brain and liver. Expressed at lower levels in kidney, mammary gland, placenta, skeletal muscle, spleen and thyroid.
Function	function:May play a role in regulating axonal regeneration and plasticity in the adult central nervous system.,PTM:Undergoes zinc metalloproteinase-mediated ectodomain shedding in neuroblastoma cells; where BRE is released as a full-length ectodomain and an N-terminal fragment containing the leucine-rich repeat (LRR) region of the protein.,similarity:Belongs to the Nogo receptor family.,similarity:Contains 8 LRR (leucine-rich) repeats.,subcellular location:Localized to the surface of neurons, including axons.,tissue specificity:Highly expressed in brain and liver. Expressed at lower levels in kidney, mammary gland, placenta, skeletal muscle, spleen and thyroid.,

Nanjing BYabscience technology Co.,Ltd



Background

function:May play a role in regulating axonal regeneration and plasticity in the adult central nervous system.,PTM:Undergoes zinc metalloproteinase-mediated ectodomain shedding in neuroblastoma cells; where BRE is released as a full-length ectodomain and an N-terminal fragment containing the leucine-rich repeat (LRR) region of the protein.,similarity:Belongs to the Nogo receptor family.,similarity:Contains 8 LRR (leucine-rich) repeats.,subcellular location:Localized to the surface of neurons, including axons.,tissue specificity:Highly expressed in brain and liver. Expressed at lower levels in kidney, mammary gland, placenta, skeletal muscle, spleen and thyroid.,

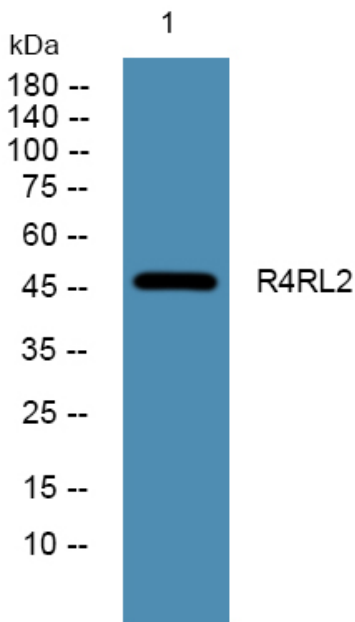
matters needing attention

Avoid repeated freezing and thawing!

Usage suggestions

This product can be used in immunological reaction related experiments. For more information, please consult technical personnel.

Products Images



Nanjing BYabscience technology Co.,Ltd