



# DKKL1 Polyclonal Antibody

<b>Catalog No</b>	BYab-07109
<b>Isotype</b>	IgG
<b>Reactivity</b>	Human;Mouse
<b>Applications</b>	WB;ELISA
<b>Gene Name</b>	DKKL1 SGY1 UNQ735/PRO1429
<b>Protein Name</b>	Dickkopf-like protein 1 (Cancer/testis antigen 34) (CT34) (Protein soggy-1) (SGY-1)
<b>Immunogen</b>	Synthesized peptide derived from human protein . at AA range: 50-130
<b>Specificity</b>	DKKL1 Polyclonal Antibody detects endogenous levels of protein.
<b>Formulation</b>	Liquid in PBS containing 50% glycerol, and 0.02% sodium azide.
<b>Source</b>	Polyclonal, Rabbit,IgG
<b>Purification</b>	The antibody was affinity-purified from rabbit antiserum by affinity-chromatography using epitope-specific immunogen.
<b>Dilution</b>	WB 1:500-2000 ELISA 1:5000-20000
<b>Concentration</b>	1 mg/ml
<b>Purity</b>	≥90%
<b>Storage Stability</b>	-20°C/1 year
<b>Synonyms</b>	
<b>Observed Band</b>	26kD
<b>Cell Pathway</b>	Secreted . Cytoplasmic vesicle, secretory vesicle, acrosome . Localized specifically to the crescent shaped acrosome at the apex of the sperm head. .
<b>Tissue Specificity</b>	More highly expressed in adult testis than in fetal testis. Exclusively expressed in the testis (at protein level). Intense expression in stages II, III and IV of spermatogenesis, whereas expression is lower in stage I.
<b>Function</b>	PTM:N-glycosylated.,similarity:To the N-terminal section of DKK-3.,
<b>Background</b>	The dickkopf protein family interacts with the Wnt signaling pathway and its members are characterized by two conserved cysteine-rich domains. This gene encodes a secreted protein that has low sequence similarity to the dickkopf-3 protein. Multiple alternatively spliced transcript variants encoding distinct isoforms have been found for this gene. [provided by RefSeq, Oct 2010],
<b>matters needing attention</b>	Avoid repeated freezing and thawing!

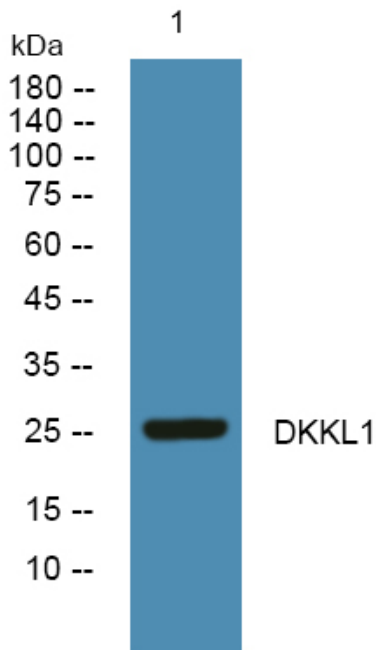
**Nanjing BYabscience technology Co.,Ltd**



### Usage suggestions

This product can be used in immunological reaction related experiments. For more information, please consult technical personnel.

## Products Images



Western blot analysis of lysates from K562 cells, primary antibody was diluted at 1:1000, 4° over night