



S10AC Polyclonal Antibody

Catalog No	BYab-07108
Isotype	IgG
Reactivity	Human;Rat;Mouse;
Applications	WB;ELISA
Gene Name	S100A12
Protein Name	Protein S100-A12 (CGRP) (Calcium-binding protein in amniotic fluid 1) (CAAF1) (Calgranulin-C) (CAGC) (Extracellular newly identified RAGE-binding protein) (EN-RAGE) (Migration inhibitory factor-relate
Immunogen	Synthesized peptide derived from human protein . at AA range: 1-80
Specificity	S10AC Polyclonal Antibody detects endogenous levels of protein.
Formulation	Liquid in PBS containing 50% glycerol, and 0.02% sodium azide.
Source	Polyclonal, Rabbit,IgG
Purification	The antibody was affinity-purified from rabbit antiserum by affinity-chromatography using epitope-specific immunogen.
Dilution	WB 1:500-2000 ELISA 1:5000-20000
Concentration	1 mg/ml
Purity	≥90%
Storage Stability	-20°C/1 year
Synonyms	
Observed Band	10kD
Cell Pathway	Secreted . Cytoplasm . Cytoplasm, cytoskeleton . Cell membrane ; Peripheral membrane protein . Predominantly localized in the cytoplasm. Upon elevation of the intracellular calcium level, translocated from the cytoplasm to the cytoskeleton and the cell membrane. Upon neutrophil activation is secreted via a microtubule-mediated, alternative pathway.
Tissue Specificity	Predominantly expressed by neutrophils, monocytes and activated macrophages. Expressed by eosinophils and macrophages in asthmatic airways in regions where mast cells accumulate. Found in high concentrations in the serum of patients suffering from various inflammatory disorders, such as rheumatoid arthritis, psoriatic arthritis, Crohn's disease, ulcerative colitis, and Kawasaki disease.
Function	function:Calcitermin possesses antifungal activity against C.albicans and is also active against E.coli and P.aeruginosa but not L.monocytogenes and S.aureus.,mass spectrometry: PubMed:11522286,similarity:Belongs to the S-101

Nanjing BYabscience technology Co.,Ltd



family.,similarity:Contains 2 EF-hand domains.,subunit:Homodimer.,tissue specificity:Monocytes and lymphocytes.,

Background

The protein encoded by this gene is a member of the S100 family of proteins containing 2 EF-hand calcium-binding motifs. S100 proteins are localized in the cytoplasm and/or nucleus of a wide range of cells, and involved in the regulation of a number of cellular processes such as cell cycle progression and differentiation. S100 genes include at least 13 members which are located as a cluster on chromosome 1q21. This protein is proposed to be involved in specific calcium-dependent signal transduction pathways and its regulatory effect on cytoskeletal components may modulate various neutrophil activities. The protein includes an antimicrobial peptide which has antibacterial activity. [provided by RefSeq, Nov 2014],

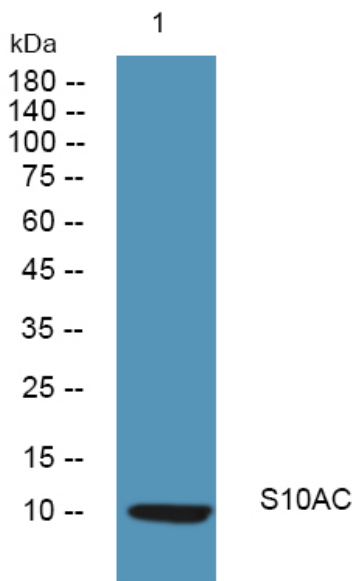
matters needing attention

Avoid repeated freezing and thawing!

Usage suggestions

This product can be used in immunological reaction related experiments. For more information, please consult technical personnel.

Products Images



Nanjing BYabscience technology Co.,Ltd