



TSP50 Polyclonal Antibody

Catalog No	BYab-07107
Isotype	IgG
Reactivity	Human;Mouse
Applications	WB;ELISA
Gene Name	PRSS50 CT20 TSP50
Protein Name	Probable threonine protease PRSS50 (EC 3.4.25.-) (Cancer/testis antigen 20) (Serine protease 50) (Testis-specific protease-like protein 50)
Immunogen	Synthesized peptide derived from human protein . at AA range: 50-130
Specificity	TSP50 Polyclonal Antibody detects endogenous levels of protein.
Formulation	Liquid in PBS containing 50% glycerol, and 0.02% sodium azide.
Source	Polyclonal, Rabbit,IgG
Purification	The antibody was affinity-purified from rabbit antiserum by affinity-chromatography using epitope-specific immunogen.
Dilution	WB 1:500-2000 ELISA 1:5000-20000
Concentration	1 mg/ml
Purity	≥90%
Storage Stability	-20°C/1 year
Synonyms	
Observed Band	42kD
Cell Pathway	Endoplasmic reticulum . May also localize to cytoplasmic membranes.
Tissue Specificity	Testis specific. Differentially expressed in some breast cancer tissues.
Function	caution:Although related to peptidase S1 family, lacks the conserved active Ser residue in position 310 which is replaced by a Thr, suggesting that it has no protease activity.,miscellaneous:DNA hypomethylation is accompanied by the expression of the gene in the testis.,similarity:Belongs to the peptidase S1 family.,similarity:Contains 1 peptidase S1 domain.,tissue specificity:Testis specific. Differentially expressed in some breast cancer tissues.,
Background	caution:Although related to peptidase S1 family, lacks the conserved active Ser residue in position 310 which is replaced by a Thr, suggesting that it has no protease activity.,miscellaneous:DNA hypomethylation is accompanied by the expression of the gene in the testis.,similarity:Belongs to the peptidase S1 family.,similarity:Contains 1 peptidase S1 domain.,tissue specificity:Testis

Nanjing BYabscience technology Co.,Ltd



specific. Differentially expressed in some breast cancer tissues.,

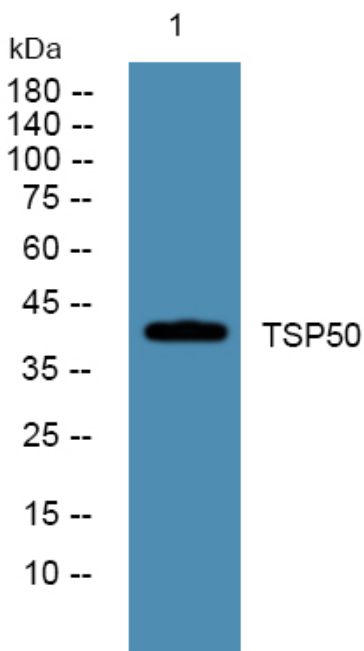
matters needing attention

Avoid repeated freezing and thawing!

Usage suggestions

This product can be used in immunological reaction related experiments. For more information, please consult technical personnel.

Products Images



Western blot analysis of lysates from PC12 cells, primary antibody was diluted at 1:1000, 4°over night