



RAP1B Polyclonal Antibody

Catalog No	BYab-07099
Isotype	IgG
Reactivity	Human;Rat;Mouse
Applications	WB;ELISA
Gene Name	RAP1B OK/SW-cl.11
Protein Name	Ras-related protein Rap-1b (GTP-binding protein smg p21B)
Immunogen	Synthesized peptide derived from human protein . at AA range: 110-190
Specificity	RAP1B Polyclonal Antibody detects endogenous levels of protein.
Formulation	Liquid in PBS containing 50% glycerol, and 0.02% sodium azide.
Source	Polyclonal, Rabbit,IgG
Purification	The antibody was affinity-purified from rabbit antiserum by affinity-chromatography using epitope-specific immunogen.
Dilution	WB 1:500-2000 ELISA 1:5000-20000
Concentration	1 mg/ml
Purity	≥90%
Storage Stability	-20°C/1 year
Synonyms	
Observed Band	20kD
Cell Pathway	Cell membrane . Cytoplasm, cytosol . Cell junction . May shuttle between plasma membrane and cytosol (PubMed:3141412). Presence of KRIT1 and CDH5 is required for its localization to the cell junction (PubMed:20332120). .
Tissue Specificity	Amygdala,Brain,Chondrosarcoma,Colon adenocarcinoma,Placenta,Platele
Function	enzyme regulation:Activated by guanine nucleotide-exchange factor (GEF) EPAC2 in a cAMP-dependent manner.,similarity:Belongs to the small GTPase superfamily. Ras family.,subcellular location:May shuttle between plasma membrane and cytosol.,subunit:Interacts with SGSM1, SGSM2 and SGSM3.,
Background	This gene encodes a member of the RAS-like small GTP-binding protein superfamily. Members of this family regulate multiple cellular processes including cell adhesion and growth and differentiation. This protein localizes to cellular membranes and has been shown to regulate integrin-mediated cell signaling. This protein also plays a role in regulating outside-in signaling in platelets. Alternate splicing results in multiple transcript variants. Pseudogenes of this gene are found

Nanjing BYabscience technology Co.,Ltd



on chromosomes 3, 5, 6 and 9. [provided by RefSeq, Oct 2011],

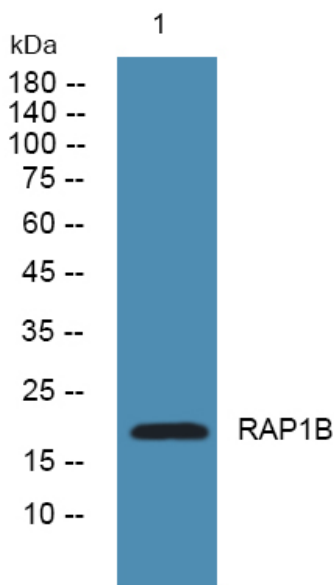
matters needing attention

Avoid repeated freezing and thawing!

Usage suggestions

This product can be used in immunological reaction related experiments. For more information, please consult technical personnel.

Products Images



Western blot analysis of lysates from A431 cells, primary antibody was diluted at 1:1000, 4° over night