



SG3A2 Polyclonal Antibody

Catalog No	BYab-07084
Isotype	IgG
Reactivity	Human;Mouse
Applications	WB;ELISA
Gene Name	SCGB3A2 PNSP1 UGRP1 UNQ566/PRO1128
Protein Name	Secretoglobin family 3A member 2 (Pneumo secretory protein 1) (PnSP-1) (Uteroglobin-related protein 1)
Immunogen	Synthesized peptide derived from human protein . at AA range: 20-100
Specificity	SG3A2 Polyclonal Antibody detects endogenous levels of protein.
Formulation	Liquid in PBS containing 50% glycerol, and 0.02% sodium azide.
Source	Polyclonal, Rabbit,IgG
Purification	The antibody was affinity-purified from rabbit antiserum by affinity-chromatography using epitope-specific immunogen.
Dilution	WB 1:500-2000 ELISA 1:5000-20000
Concentration	1 mg/ml
Purity	≥90%
Storage Stability	-20°C/1 year
Synonyms	
Observed Band	10kD
Cell Pathway	Secreted .
Tissue Specificity	Highly expressed in lung and trachea (PubMed:12406855, PubMed:12175512, PubMed:12847263). Detected throughout the airway epithelium in lung, with slightly higher expression in large airways (PubMed:12406855). Found in lung submucosal gland acinus where it localizes to serous-like cells (PubMed:12406855). Probably expressed in club/Clara cells of the bronchioles (PubMed:12847263). Not detected in other tissues tested (PubMed:12847263).
Function	similarity:Belongs to the secretoglobin family. UGRP subfamily.,subunit:Homodimer.,tissue specificity:Highly expressed in lung.,
Background	The protein encoded by this gene is a secreted lung surfactant protein and a downstream target of thyroid transcription factor. A single nucleotide polymorphism in the promoter of this gene results in susceptibility to asthma.[provided by RefSeq, Mar 2010],

Nanjing BYabscience technology Co.,Ltd



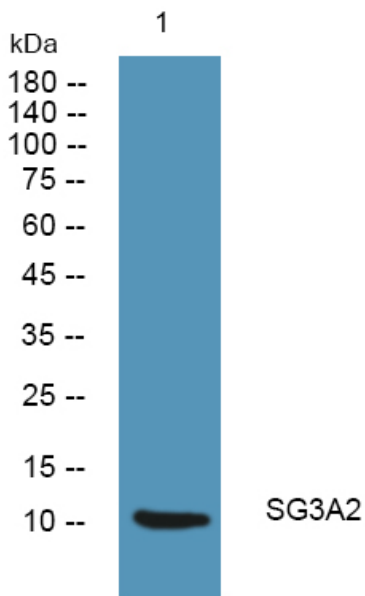
matters needing attention

Avoid repeated freezing and thawing!

Usage suggestions

This product can be used in immunological reaction related experiments. For more information, please consult technical personnel.

Products Images



Western blot analysis of lysates from Jarkat cells, primary antibody was diluted at 1:1000, 4° over night