



F19A2 Polyclonal Antibody

Catalog No	BYab-07076
Isotype	IgG
Reactivity	Human;Mouse
Applications	WB;ELISA
Gene Name	FAM19A2 Tafa2
Protein Name	Protein FAM19A2 (Chemokine-like protein Tafa-2)
Immunogen	Synthesized peptide derived from part region of human protein
Specificity	F19A2 Polyclonal Antibody detects endogenous levels of protein.
Formulation	Liquid in PBS containing 50% glycerol, and 0.02% sodium azide.
Source	Polyclonal, Rabbit,IgG
Purification	The antibody was affinity-purified from rabbit antiserum by affinity-chromatography using epitope-specific immunogen.
Dilution	WB 1:500-2000 ELISA 1:5000-20000
Concentration	1 mg/ml
Purity	≥90%
Storage Stability	-20°C/1 year
Synonyms	
Observed Band	14kD
Cell Pathway	Cytoplasm . Nucleus .
Tissue Specificity	Brain-specific.
Function	similarity:Belongs to the FAM19/Tafa family.,tissue specificity:Brain-specific.,
Background	family with sequence similarity 19 member A2, C-C motif chemokine like(FAM19A2) Homo sapiens This gene is a member of the Tafa family which is composed of five highly homologous genes that encode small secreted proteins. These proteins contain conserved cysteine residues at fixed positions, and are distantly related to MIP-1alpha, a member of the CC-chemokine family. The Tafa proteins are predominantly expressed in specific regions of the brain, and are postulated to function as brain-specific chemokines or neurokinins, that act as regulators of immune and nervous cells. [provided by RefSeq, Jul 2008],

Nanjing BYabscience technology Co.,Ltd



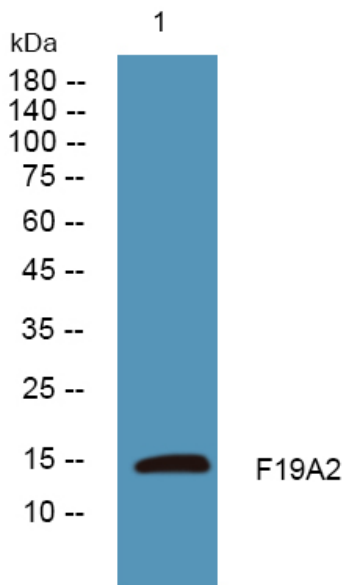
matters needing attention

Avoid repeated freezing and thawing!

Usage suggestions

This product can be used in immunological reaction related experiments. For more information, please consult technical personnel.

Products Images



Nanjing BYabscience technology Co.,Ltd