



NINJ1 Polyclonal Antibody

Catalog No	BYab-07062
Isotype	IgG
Reactivity	Human;Rat;Mouse
Applications	WB;ELISA
Gene Name	NINJ1
Protein Name	Ninjurin-1 (Nerve injury-induced protein 1)
Immunogen	Synthesized peptide derived from part region of human protein. AA range 1-56
Specificity	NINJ1 Polyclonal Antibody detects endogenous levels of protein.
Formulation	Liquid in PBS containing 50% glycerol, and 0.02% sodium azide.
Source	Polyclonal, Rabbit,IgG
Purification	The antibody was affinity-purified from rabbit antiserum by affinity-chromatography using epitope-specific immunogen.
Dilution	WB 1:500-2000 ELISA 1:5000-20000
Concentration	1 mg/ml
Purity	≥90%
Storage Stability	-20°C/1 year
Synonyms	
Observed Band	16kD
Cell Pathway	[Ninjurin-1]: Cell membrane ; Multi-pass membrane protein . Cell junction, synapse, synaptic cell membrane ; Multi-pass membrane protein .; [Secreted ninjurin-1]: Secreted .
Tissue Specificity	Widely expressed in both adult and embryonic tissues, primarily those of epithelial origin.
Function	function:Homophilic cell adhesion molecule that promotes axonal growth. May play a role in nerve regeneration and in the formation and function of other tissues. Cell adhesion requires divalent cations.,induction:By nerve injury both in dorsal root ganglion neurons and in Schwann cells.,similarity:Belongs to the ninjurin family.,tissue specificity:Widely expressed in both adult and embryonic tissues, primarily those of epithelial origin.,
Background	The ninjurin protein is upregulated after nerve injury both in dorsal root ganglion neurons and in Schwann cells (Araki and Milbrandt, 1996 [PubMed 8780658]). It demonstrates properties of a homophilic adhesion molecule and promotes neurite outgrowth from primary cultured dorsal root ganglion neurons.[supplied by OMIM,

Nanjing BYabscience technology Co.,Ltd



Aug 2009],

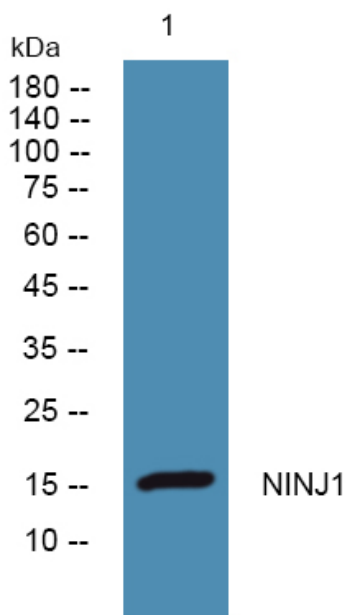
matters needing attention

Avoid repeated freezing and thawing!

Usage suggestions

This product can be used in immunological reaction related experiments. For more information, please consult technical personnel.

Products Images



Western blot analysis of lysates from K562 cells, primary antibody was diluted at 1:1000, 4° over night