



ESAM Polyclonal Antibody

Catalog No	BYab-07058
Isotype	IgG
Reactivity	Human;Rat;Mouse
Applications	WB;ELISA
Gene Name	ESAM UNQ220/PRO246
Protein Name	Endothelial cell-selective adhesion molecule
Immunogen	Synthesized peptide derived from part region of human protein
Specificity	ESAM Polyclonal Antibody detects endogenous levels of protein.
Formulation	Liquid in PBS containing 50% glycerol, and 0.02% sodium azide.
Source	Polyclonal, Rabbit,IgG
Purification	The antibody was affinity-purified from rabbit antiserum by affinity-chromatography using epitope-specific immunogen.
Dilution	WB 1:500-2000 ELISA 1:5000-20000
Concentration	1 mg/ml
Purity	≥90%
Storage Stability	-20°C/1 year
Synonyms	
Observed Band	42kD
Cell Pathway	Cell junction, adherens junction . Cell junction, tight junction . Cell membrane ; Single-pass type I membrane protein .
Tissue Specificity	Highly expressed in endothelial cells.
Function	function:Can mediate aggregation most likely through a homophilic molecular interaction.,similarity:Contains 1 Ig-like C2-type (immunoglobulin-like) domain.,similarity:Contains 1 Ig-like V-type (immunoglobulin-like) domain.,subunit:Interacts with BAIAP1.,tissue specificity:Highly expressed in endothelial cells.,
Background	function:Can mediate aggregation most likely through a homophilic molecular interaction.,similarity:Contains 1 Ig-like C2-type (immunoglobulin-like) domain.,similarity:Contains 1 Ig-like V-type (immunoglobulin-like) domain.,subunit:Interacts with BAIAP1.,tissue specificity:Highly expressed in endothelial cells.,

Nanjing BYabscience technology Co.,Ltd



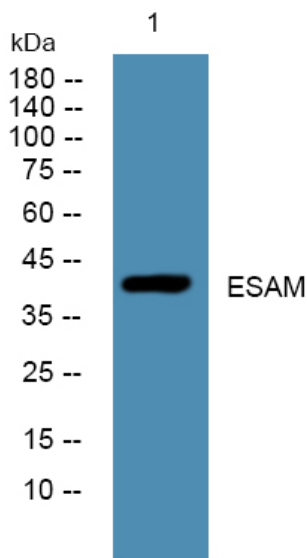
matters needing attention

Avoid repeated freezing and thawing!

Usage suggestions

This product can be used in immunological reaction related experiments. For more information, please consult technical personnel.

Products Images



Western blot analysis of lysates from Jarkat cells, primary antibody was diluted at 1:1000, 4° over night