



TLN2 Polyclonal Antibody

Catalog No	BYab-07041
Isotype	IgG
Reactivity	Human;Mouse
Applications	IHC;IF
Gene Name	TLN2 KIAA0320
Protein Name	Talin-2
Immunogen	Synthesized peptide derived from part region of human protein
Specificity	TLN2 Polyclonal Antibody detects endogenous levels of protein.
Formulation	Liquid in PBS containing 50% glycerol, and 0.02% sodium azide.
Source	Polyclonal, Rabbit,IgG
Purification	The antibody was affinity-purified from rabbit antiserum by affinity-chromatography using epitope-specific immunogen.
Dilution	IHC-p 1:50-300. IF 1:50-200
Concentration	1 mg/ml
Purity	≥90%
Storage Stability	-20°C/1 year
Synonyms	
Observed Band	279kD
Cell Pathway	Cytoplasm . Cell junction, focal adhesion . Cell junction, synapse . Cell membrane; Peripheral membrane protein; Cytoplasmic side . Cytoplasm, cytoskeleton . Focal adhesion plaques and synapses (PubMed:12422219) .
Tissue Specificity	Brain,Epithelium,Skeletal muscle,
Function	function:As a major component of focal adhesion plaques that links integrin to the actin cytoskeleton, may play an important role in cell adhesion. Recruits PIP5K1C to focal adhesion plaques and strongly activates its kinase activity.,similarity:Contains 1 FERM domain.,similarity:Contains 1 I/LWEQ domain.,subcellular location:Focal adhesion plaques and synapses.,subunit:Interacts directly with PIP5K1C.,
Background	This gene encodes a protein related to talin 1, a cytoskeletal protein that plays a significant role in the assembly of actin filaments and in spreading and migration of various cell types, including fibroblasts and osteoclasts. This protein has a different pattern of expression compared to talin 1 but, like talin 1, is thought to

Nanjing BYabscience technology Co.,Ltd



associate with unique transmembrane receptors to form novel linkages between extracellular matrices and the actin cytoskeleton. [provided by RefSeq, Jul 2008],

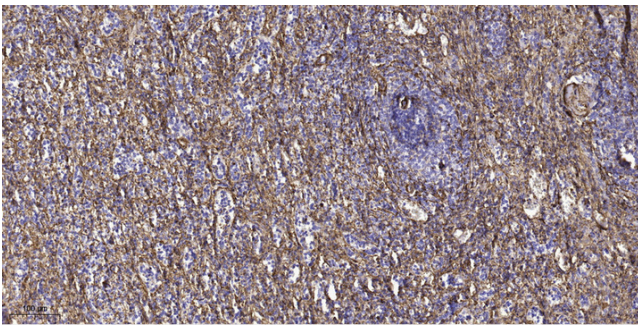
matters needing attention

Avoid repeated freezing and thawing!

Usage suggestions

This product can be used in immunological reaction related experiments. For more information, please consult technical personnel.

Products Images



Immunohistochemical analysis of paraffin-embedded human spleen tissue. 1,primary Antibody was diluted at 1:200(4° overnight). 2, Sodium citrate pH 6.0 was used for antigen retrieval(>98°C,20min). 3,Secondary antibody was diluted at 1:200