



# PYGO2 Polyclonal Antibody

<b>Catalog No</b>	BYab-07039
<b>Isotype</b>	IgG
<b>Reactivity</b>	Human;Rat;Mouse;
<b>Applications</b>	WB;ELISA
<b>Gene Name</b>	PYGO2 PP7910
<b>Protein Name</b>	Pygopus homolog 2
<b>Immunogen</b>	Synthesized peptide derived from part region of human protein
<b>Specificity</b>	PYGO2 Polyclonal Antibody detects endogenous levels of protein.
<b>Formulation</b>	Liquid in PBS containing 50% glycerol, and 0.02% sodium azide.
<b>Source</b>	Polyclonal, Rabbit,IgG
<b>Purification</b>	The antibody was affinity-purified from rabbit antiserum by affinity-chromatography using epitope-specific immunogen.
<b>Dilution</b>	WB 1:500-2000 ELISA 1:5000-20000
<b>Concentration</b>	1 mg/ml
<b>Purity</b>	≥90%
<b>Storage Stability</b>	-20°C/1 year
<b>Synonyms</b>	
<b>Observed Band</b>	44kD
<b>Cell Pathway</b>	Nucleus .
<b>Tissue Specificity</b>	Brain,Epithelium,Ovary,Placenta,
<b>Function</b>	function:Involved in signal transduction through the Wnt pathway.,sequence caution:Sequencing errors.,similarity:Contains 1 PHD-type zinc finger.,subunit:Binds to BCL9 via the PHD-type zinc finger motif, and thereby becomes part of the nuclear beta-catenin/TCF complex.,
<b>Background</b>	function:Involved in signal transduction through the Wnt pathway.,sequence caution:Sequencing errors.,similarity:Contains 1 PHD-type zinc finger.,subunit:Binds to BCL9 via the PHD-type zinc finger motif, and thereby becomes part of the nuclear beta-catenin/TCF complex.,
<b>matters needing attention</b>	Avoid repeated freezing and thawing!

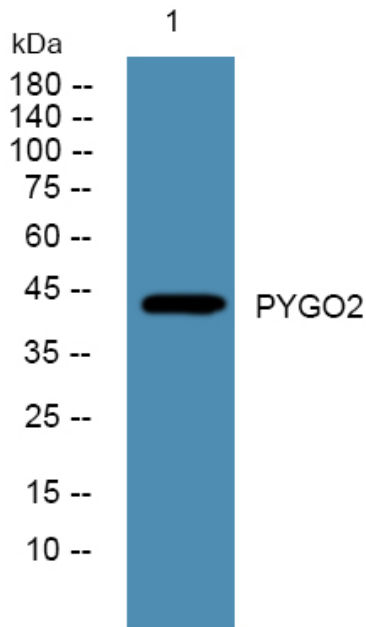
Nanjing BYabscience technology Co.,Ltd



### Usage suggestions

This product can be used in immunological reaction related experiments. For more information, please consult technical personnel.

## Products Images



Nanjing BYabscience technology Co.,Ltd

网址: [www.njbybio.com](http://www.njbybio.com)

官方热线: 025-5229-8998

监督电话: 15950492658