



TNR27 Polyclonal Antibody

Catalog No	BYab-07035
Isotype	IgG
Reactivity	Human;Mouse
Applications	WB;ELISA
Gene Name	EDA2R TNFRSF27 XEDAR UNQ2448/PRO5727/PRO34080
Protein Name	Tumor necrosis factor receptor superfamily member 27 (X-linked ectodysplasin-A2 receptor) (EDA-A2 receptor)
Immunogen	Synthesized peptide derived from part region of human protein
Specificity	TNR27 Polyclonal Antibody detects endogenous levels of protein.
Formulation	Liquid in PBS containing 50% glycerol, and 0.02% sodium azide.
Source	Polyclonal, Rabbit,IgG
Purification	The antibody was affinity-purified from rabbit antiserum by affinity-chromatography using epitope-specific immunogen.
Dilution	WB 1:500-2000 ELISA 1:5000-20000
Concentration	1 mg/ml
Purity	≥90%
Storage Stability	-20°C/1 year
Synonyms	
Observed Band	32kD
Cell Pathway	Membrane; Single-pass type III membrane protein.
Tissue Specificity	Brain,Fetal kidney,
Function	function:Receptor for EDA isoform A2, but not for EDA isoform A1. Mediates the activation of the NF-kappa-B and JNK pathways. Activation seems to be mediated by binding to TRAF3 and TRAF6.,similarity:Contains 3 TNFR-Cys repeats.,subunit:Associates with TRAF1, TRAF3 and TRAF6.,
Background	The protein encoded by this gene is a type III transmembrane protein of the TNFR (tumor necrosis factor receptor) superfamily, and contains cysteine-rich repeats and a single transmembrane domain. This protein binds to the EDA-A2 isoform of ectodysplasin, which plays an important role in maintenance of hair and teeth. Alternatively spliced transcript variants encodes distinct protein isoforms. [provided by RefSeq, Apr 2016],

Nanjing BYabscience technology Co.,Ltd



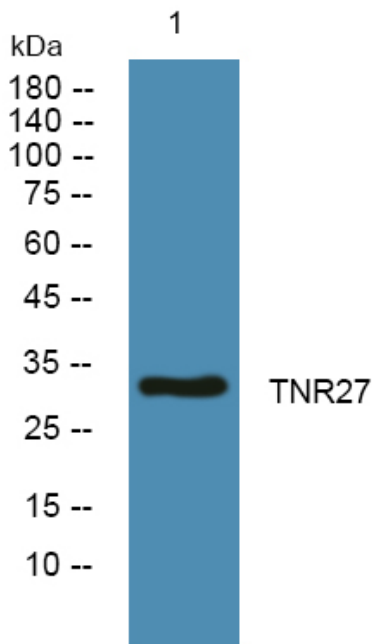
matters needing attention

Avoid repeated freezing and thawing!

Usage suggestions

This product can be used in immunological reaction related experiments. For more information, please consult technical personnel.

Products Images



Western blot analysis of lysates from Jarkat cells, primary antibody was diluted at 1:1000, 4° over night