



OSCAR Polyclonal Antibody

Catalog No	BYab-07034
Isotype	IgG
Reactivity	Human;Mouse
Applications	WB;ELISA
Gene Name	OSCAR
Protein Name	Osteoclast-associated immunoglobulin-like receptor (Osteoclast-associated receptor) (hOSCAR) (Polymeric immunoglobulin receptor 3) (PIgR-3) (PIgR3) (Poly-Ig receptor 3)
Immunogen	Synthesized peptide derived from part region of human protein
Specificity	OSCAR Polyclonal Antibody detects endogenous levels of protein.
Formulation	Liquid in PBS containing 50% glycerol, and 0.02% sodium azide.
Source	Polyclonal, Rabbit,IgG
Purification	The antibody was affinity-purified from rabbit antiserum by affinity-chromatography using epitope-specific immunogen.
Dilution	WB 1:500-2000 ELISA 1:5000-20000
Concentration	1 mg/ml
Purity	≥90%
Storage Stability	-20°C/1 year
Synonyms	
Observed Band	31kD
Cell Pathway	[Isoform 1]: Secreted .; [Isoform 2]: Cell membrane ; Single-pass type I membrane protein .
Tissue Specificity	Testis,
Function	caution:The sequence shown here is derived from an Ensembl automatic analysis pipeline and should be considered as preliminary data.,function:Regulator of osteoclastogenesis which plays an important bone-specific function in osteoclast differentiation.,similarity:Belongs to the leukocyte receptor complex/polymeric immunoglobulin receptor (PIR/LRC) family.,similarity:Contains 2 Ig-like (immunoglobulin-like) domains.,
Background	Osteoclasts are multinucleated cells that resorb bone and are essential for bone homeostasis. This gene encodes an osteoclast-associated receptor (OSCAR), which is a member of the leukocyte receptor complex protein family that plays critical roles in the regulation of both innate and adaptive immune responses. The

Nanjing BYabscience technology Co.,Ltd



encoded protein may play a role in oxidative stress-mediated atherogenesis as well as monocyte adhesion. Multiple alternatively spliced transcript variants encoding different isoforms have been found for this gene. [provided by RefSeq, Aug 2013],

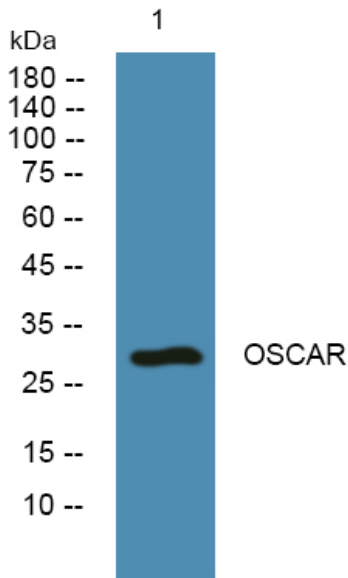
matters needing attention

Avoid repeated freezing and thawing!

Usage suggestions

This product can be used in immunological reaction related experiments. For more information, please consult technical personnel.

Products Images



Western blot analysis of lysates from K562 cells, primary antibody was diluted at 1:1000, 4° over night