



# OLIG1 Polyclonal Antibody

<b>Catalog No</b>	BYab-07032
<b>Isotype</b>	IgG
<b>Reactivity</b>	Human;Rat;Mouse
<b>Applications</b>	WB;ELISA
<b>Gene Name</b>	OLIG1 BHLHB6 BHLHE21
<b>Protein Name</b>	Oligodendrocyte transcription factor 1 (Oligo1) (Class B basic helix-loop-helix protein 6) (bHLHb6) (Class E basic helix-loop-helix protein 21) (bHLHe21)
<b>Immunogen</b>	Synthesized peptide derived from part region of human protein
<b>Specificity</b>	OLIG1 Polyclonal Antibody detects endogenous levels of protein.
<b>Formulation</b>	Liquid in PBS containing 50% glycerol, and 0.02% sodium azide.
<b>Source</b>	Polyclonal, Rabbit,IgG
<b>Purification</b>	The antibody was affinity-purified from rabbit antiserum by affinity-chromatography using epitope-specific immunogen.
<b>Dilution</b>	WB 1:500-2000 ELISA 1:5000-20000
<b>Concentration</b>	1 mg/ml
<b>Purity</b>	≥90%
<b>Storage Stability</b>	-20°C/1 year
<b>Synonyms</b>	
<b>Observed Band</b>	29kD
<b>Cell Pathway</b>	Nucleus .
<b>Tissue Specificity</b>	Expressed in the brain, in oligodendrocytes. Strongly expressed in oligodendrogliomas, while expression is weak to moderate in astrocytomas. Expression in glioblastomas is highly variable.
<b>Function</b>	function:Promotes formation and maturation of oligodendrocytes, especially within the brain. Cooperates with OLIG2 to establish the pMN domain of the embryonic neural tube.,induction:By SHH.,similarity:Contains 1 basic helix-loop-helix (bHLH) domain.,tissue specificity:Expressed in the brain, in oligodendrocytes. Strongly expressed in oligodendrogliomas, while expression is weak to moderate in astrocytomas. Expression in glioblastomas is highly variable.,
<b>Background</b>	function:Promotes formation and maturation of oligodendrocytes, especially within the brain. Cooperates with OLIG2 to establish the pMN domain of the embryonic neural tube.,induction:By SHH.,similarity:Contains 1 basic helix-loop-helix (bHLH) domain.,tissue specificity:Expressed in the brain, in oligodendrocytes. Strongly

Nanjing BYabscience technology Co.,Ltd



expressed in oligodendrogliomas, while expression is weak to moderate in astrocytomas. Expression in glioblastomas is highly variable.,

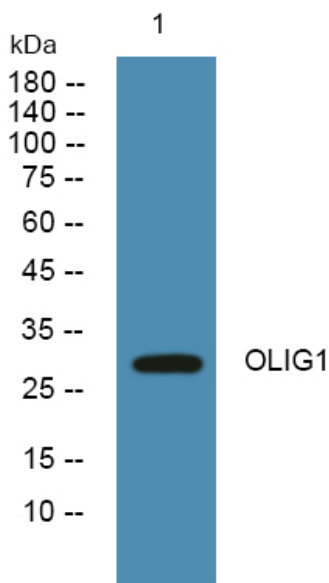
**matters needing attention**

Avoid repeated freezing and thawing!

**Usage suggestions**

This product can be used in immunological reaction related experiments. For more information, please consult technical personnel.

## Products Images



Western blot analysis of lysates from K562 cells, primary antibody was diluted at 1:1000, 4°over night