



PON3 Polyclonal Antibody

Catalog No	BYab-07031
Isotype	IgG
Reactivity	Human;Rat;Mouse
Applications	WB;ELISA
Gene Name	PON3
Protein Name	Serum paraoxonase/lactonase 3 (EC 3.1.1.2) (EC 3.1.1.81) (EC 3.1.8.1)
Immunogen	Synthesized peptide derived from part region of human protein
Specificity	PON3 Polyclonal Antibody detects endogenous levels of protein.
Formulation	Liquid in PBS containing 50% glycerol, and 0.02% sodium azide.
Source	Polyclonal, Rabbit,IgG
Purification	The antibody was affinity-purified from rabbit antiserum by affinity-chromatography using epitope-specific immunogen.
Dilution	WB 1:500-2000 ELISA 1:5000-20000
Concentration	1 mg/ml
Purity	≥90%
Storage Stability	-20°C/1 year
Synonyms	
Observed Band	38kD
Cell Pathway	Secreted, extracellular space .
Tissue Specificity	Hepatoma,Liver,Plasma,
Function	catalytic activity:A phenyl acetate + H(2)O = a phenol + acetate.,catalytic activity:An aryl dialkyl phosphate + H(2)O = dialkyl phosphate + an aryl alcohol.,function:Has very limited arylesterase and no paraoxonase activities but rapidly hydrolyzes lactones such as statin prodrugs (e.g. lovastatin). Hydrolyzes aromatic lactones and 5- or 6-member ring lactones with aliphatic substituents but not simple lactones or those with polar substituents.,PTM:Glycosylated.,PTM:The signal sequence is not cleaved.,similarity:Belongs to the paraoxonase family.,
Background	This gene is a member of the paraoxonase family and lies in a cluster on chromosome 7 with the other two family members. The encoded protein is secreted into the bloodstream and associates with high-density lipoprotein (HDL). The protein also rapidly hydrolyzes lactones and can inhibit the oxidation of

Nanjing BYabscience technology Co.,Ltd



low-density lipoprotein (LDL), a function that is believed to slow the initiation and progression of atherosclerosis. Alternatively spliced variants which encode different protein isoforms have been described; however, only one has been fully characterized. [provided by RefSeq, Jul 2008],

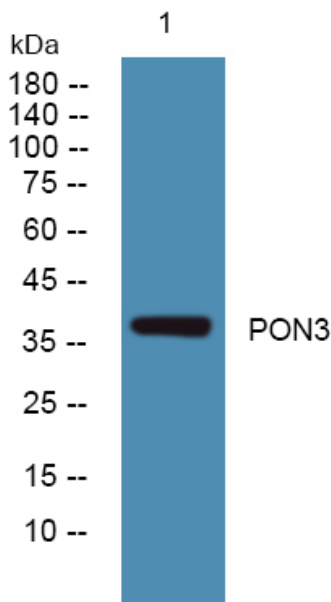
matters needing attention

Avoid repeated freezing and thawing!

Usage suggestions

This product can be used in immunological reaction related experiments. For more information, please consult technical personnel.

Products Images



Western blot analysis of lysates from HCT116 cells, primary antibody was diluted at 1:1000, 4° over night