



CART Polyclonal Antibody

Catalog No	BYab-07018
Isotype	IgG
Reactivity	Human;Rat;Mouse
Applications	WB;ELISA
Gene Name	CARTPT CART
Protein Name	Cocaine- and amphetamine-regulated transcript protein [Cleaved into: CART(1-39); CART(42-89)]
Immunogen	Synthesized peptide derived from part region of human protein AA range: 1-50
Specificity	CART Polyclonal Antibody detects endogenous levels of protein.
Formulation	Liquid in PBS containing 50% glycerol, and 0.02% sodium azide.
Source	Polyclonal, Rabbit,IgG
Purification	The antibody was affinity-purified from rabbit antiserum by affinity-chromatography using epitope-specific immunogen.
Dilution	WB 1:500-2000 ELISA 1:5000-20000
Concentration	1 mg/ml
Purity	≥90%
Storage Stability	-20°C/1 year
Synonyms	
Observed Band	12kD
Cell Pathway	Secreted .
Tissue Specificity	Hypothalamus. Found in neurons of the ventrolateral part of the arcuate nucleus, in the external zone of the median eminence, and also found in terminals in the periventricular part of the paraventricular nucleus.
Function	disease:A defect in CART is associated with reduced resting energy expenditure and cosegregates with obesity phenotype.,function:Satiety factor closely associated with the actions of leptin and neuropeptide y; this anorectic peptide inhibits both normal and starvation-induced feeding and completely blocks the feeding response induced by neuropeptide Y and regulated by leptin in the hypothalamus. It promotes neuronal development and survival in vitro.,induction:By leptin.,similarity:Belongs to the CART family.,tissue specificity:Hypothalamus. Found in neurons of the ventrolateral part of the arcuate nucleus, in the external zone of the median eminence, and also found in terminals in the periventricular part of the paraventricular nucleus.,

Nanjing BYabscience technology Co.,Ltd



Background

This gene encodes a preproprotein that is proteolytically processed to generate multiple biologically active peptides. These peptides play a role in appetite, energy balance, maintenance of body weight, reward and addiction, and the stress response. Expression of a similar gene transcript in rodents is upregulated following administration of cocaine and amphetamine. Mutations in this gene are associated with susceptibility to obesity in humans. [provided by RefSeq, Feb 2016],

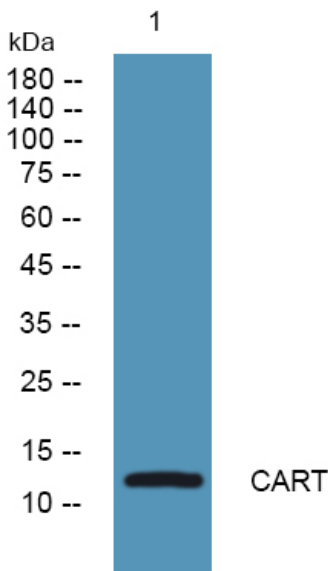
matters needing attention

Avoid repeated freezing and thawing!

Usage suggestions

This product can be used in immunological reaction related experiments. For more information, please consult technical personnel.

Products Images



Western blot analysis of lysates from K562 cells, primary antibody was diluted at 1:1000, 4° over night