



# SPIT2 Polyclonal Antibody

<b>Catalog No</b>	BYab-07014
<b>Isotype</b>	IgG
<b>Reactivity</b>	Human;Mouse
<b>Applications</b>	WB;ELISA
<b>Gene Name</b>	SPINT2 HAI2 KOP
<b>Protein Name</b>	Kunitz-type protease inhibitor 2 (Hepatocyte growth factor activator inhibitor type 2) (HAI-2) (Placental bikunin)
<b>Immunogen</b>	Synthesized peptide derived from part region of human protein
<b>Specificity</b>	SPIT2 Polyclonal Antibody detects endogenous levels of protein.
<b>Formulation</b>	Liquid in PBS containing 50% glycerol, and 0.02% sodium azide.
<b>Source</b>	Polyclonal, Rabbit,IgG
<b>Purification</b>	The antibody was affinity-purified from rabbit antiserum by affinity-chromatography using epitope-specific immunogen.
<b>Dilution</b>	WB 1:500-2000 ELISA 1:5000-20000
<b>Concentration</b>	1 mg/ml
<b>Purity</b>	≥90%
<b>Storage Stability</b>	-20°C/1 year
<b>Synonyms</b>	
<b>Observed Band</b>	27kD
<b>Cell Pathway</b>	Membrane ; Single-pass type I membrane protein .
<b>Tissue Specificity</b>	Expressed in placenta, kidney, pancreas, prostate, testis, thymus, and trachea.
<b>Function</b>	domain:This inhibitor contains two inhibitory domains.,function:Inhibitor of HGF activator. Also inhibits plasmin, plasma and tissue kallikrein, and factor Xla.,similarity:Contains 1 BPTI/Kunitz inhibitor domain.,similarity:Contains 2 BPTI/Kunitz inhibitor domains.,tissue specificity:Expressed in placenta, kidney, pancreas, prostate, testis, thymus, and trachea.,
<b>Background</b>	This gene encodes a transmembrane protein with two extracellular Kunitz domains that inhibits a variety of serine proteases. The protein inhibits HGF activator which prevents the formation of active hepatocyte growth factor. This gene is a putative tumor suppressor, and mutations in this gene result in congenital sodium diarrhea. Multiple transcript variants encoding different isoforms have been found for this gene. [provided by RefSeq, Oct 2009],

Nanjing BYabscience technology Co.,Ltd



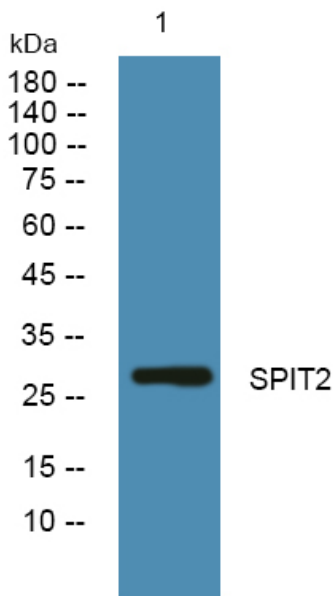
**matters needing attention**

Avoid repeated freezing and thawing!

**Usage suggestions**

This product can be used in immunological reaction related experiments. For more information, please consult technical personnel.

## Products Images



Western blot analysis of lysates from K562 cells, primary antibody was diluted at 1:1000, 4° over night