



AMPM1 Polyclonal Antibody

Catalog No	BYab-07010
Isotype	IgG
Reactivity	Human;Mouse
Applications	WB;ELISA
Gene Name	METAP1 KIAA0094
Protein Name	Methionine aminopeptidase 1 (MAP 1) (MetAP 1) (EC 3.4.11.18) (Peptidase M 1)
Immunogen	Synthesized peptide derived from part region of human protein
Specificity	AMPM1 Polyclonal Antibody detects endogenous levels of protein.
Formulation	Liquid in PBS containing 50% glycerol, and 0.02% sodium azide.
Source	Polyclonal, Rabbit,IgG
Purification	The antibody was affinity-purified from rabbit antiserum by affinity-chromatography using epitope-specific immunogen.
Dilution	WB 1:500-2000 ELISA 1:5000-20000
Concentration	1 mg/ml
Purity	≥90%
Storage Stability	-20°C/1 year
Synonyms	
Observed Band	42kD
Cell Pathway	Cytoplasm .
Tissue Specificity	Bone marrow,Placenta,Testis,
Function	catalytic activity:Release of N-terminal amino acids, preferentially methionine, from peptides and arylamides.,cofactor:Binds 1 sodium ion per subunit. The sodium ion has a structural role.,cofactor:Binds 2 cobalt ions per subunit.,cofactor:Binds 2 cobalt ions per subunit. The true nature of the physiological cofactor is under debate. The enzyme is also active with zinc, manganese or divalent iron ions.,function:Removes the amino-terminal methionine from nascent proteins.,function:Removes the amino-terminal methionine from nascent proteins. Required for normal progression through the cell cycle.,similarity:Belongs to the peptidase M24A family.,
Background	catalytic activity:Release of N-terminal amino acids, preferentially methionine, from peptides and arylamides.,cofactor:Binds 1 sodium ion per subunit. The

Nanjing BYabscience technology Co.,Ltd



sodium ion has a structural role.,cofactor: Binds 2 cobalt ions per subunit.,cofactor: Binds 2 cobalt ions per subunit. The true nature of the physiological cofactor is under debate. The enzyme is also active with zinc, manganese or divalent iron ions.,function: Removes the amino-terminal methionine from nascent proteins.,function: Removes the amino-terminal methionine from nascent proteins. Required for normal progression through the cell cycle.,similarity: Belongs to the peptidase M24A family.,

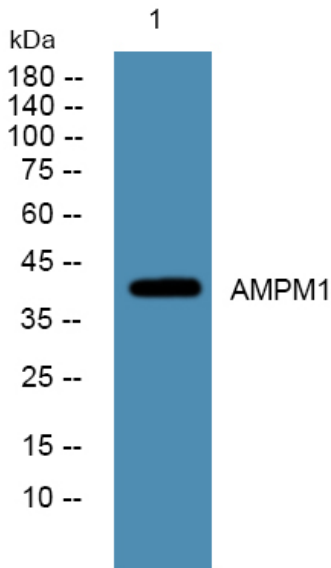
matters needing attention

Avoid repeated freezing and thawing!

Usage suggestions

This product can be used in immunological reaction related experiments. For more information, please consult technical personnel.

Products Images



Western blot analysis of lysates from K562 cells, primary antibody was diluted at 1:1000, 4° over night