



SPB8 Polyclonal Antibody

Catalog No	BYab-07004
Isotype	IgG
Reactivity	Human;Mouse
Applications	WB;ELISA
Gene Name	SERPINB8 PI8
Protein Name	Serpin B8 (Cytoplasmic antiproteinase 2) (CAP-2) (CAP2) (Peptidase inhibitor 8) (PI-8)
Immunogen	Synthesized peptide derived from part region of human protein
Specificity	SPB8 Polyclonal Antibody detects endogenous levels of protein.
Formulation	Liquid in PBS containing 50% glycerol, and 0.02% sodium azide.
Source	Polyclonal, Rabbit,IgG
Purification	The antibody was affinity-purified from rabbit antiserum by affinity-chromatography using epitope-specific immunogen.
Dilution	WB 1:500-2000 ELISA 1:5000-20000
Concentration	1 mg/ml
Purity	≥90%
Storage Stability	-20°C/1 year
Synonyms	
Observed Band	41kD
Cell Pathway	Cytoplasm.
Tissue Specificity	Oesophagus,Placenta,Skin,
Function	similarity:Belongs to the serpin family.,similarity:Belongs to the serpin family. Ov-serpin subfamily.,
Background	The superfamily of high molecular weight serine proteinase inhibitors (serpins) regulate a diverse set of intracellular and extracellular processes such as complement activation, fibrinolysis, coagulation, cellular differentiation, tumor suppression, apoptosis, and cell migration. Serpins are characterized by well-conserved a tertiary structure that consists of 3 beta sheets and 8 or 9 alpha helices (Huber and Carrell, 1989 [PubMed 2690952]). A critical portion of the molecule, the reactive center loop connects beta sheets A and C. Protease inhibitor-8 (PI8; SERPINB8) is a member of the ov-serpin subfamily, which, relative to the archetypal serpin PI1 (MIM 107400), is characterized by a high

Nanjing BYabscience technology Co.,Ltd



degree of homology to chicken ovalbumin, lack of N- and C-terminal extensions, absence of a signal peptide, and a serine rather than an asparagine residue at the penultimate position (summary by Bartuski

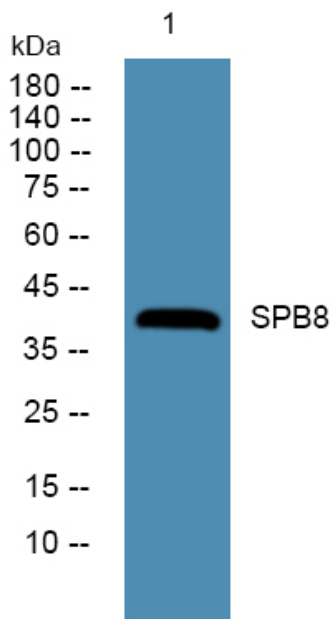
matters needing attention

Avoid repeated freezing and thawing!

Usage suggestions

This product can be used in immunological reaction related experiments. For more information, please consult technical personnel.

Products Images



Western blot analysis of lysates from HCT116 cells, primary antibody was diluted at 1:1000, 4°over night