



# BRAC Polyclonal Antibody

<b>Catalog No</b>	BYab-06991
<b>Isotype</b>	IgG
<b>Reactivity</b>	Human;Mouse
<b>Applications</b>	WB;ELISA
<b>Gene Name</b>	T
<b>Protein Name</b>	Brachyury protein (Protein T)
<b>Immunogen</b>	Synthesized peptide derived from part region of human protein AA range: 181-230
<b>Specificity</b>	BRAC Polyclonal Antibody detects endogenous levels of protein.
<b>Formulation</b>	Liquid in PBS containing 50% glycerol, and 0.02% sodium azide.
<b>Source</b>	Polyclonal, Rabbit,IgG
<b>Purification</b>	The antibody was affinity-purified from rabbit antiserum by affinity-chromatography using epitope-specific immunogen.
<b>Dilution</b>	WB 1:500-2000 ELISA 1:5000-20000
<b>Concentration</b>	1 mg/ml
<b>Purity</b>	≥90%
<b>Storage Stability</b>	-20°C/1 year
<b>Synonyms</b>	
<b>Observed Band</b>	47kD
<b>Cell Pathway</b>	Nucleus .
<b>Tissue Specificity</b>	Detected in testis, but not in other, normal tissues. Detected in lung tumors (at protein level).
<b>Function</b>	disease:Genetic variations in T are associated with susceptibility to neural tube defects (NTD) [MIM:182940]. NTD are common congenital malformations. Spina bifida, which results from malformations in the caudal region of the neural tube, is compatible with life but associated with significant morbidity, including lower limb paralysis.,function:Involved in the transcriptional regulation of genes required for mesoderm formation and differentiation. Binds to a palindromic site (called T site) and activates gene transcription when bound to such a site.,similarity:Contains 1 T-box DNA-binding domain.,subunit:Monomer.,
<b>Background</b>	The protein encoded by this gene is an embryonic nuclear transcription factor that binds to a specific DNA element, the palindromic T-site. It binds through a

Nanjing BYabscience technology Co.,Ltd



region in its N-terminus, called the T-box, and effects transcription of genes required for mesoderm formation and differentiation. The protein is localized to notochord-derived cells. Two transcript variants encoding different isoforms have been found for this gene. [provided by RefSeq, Jul 2012],

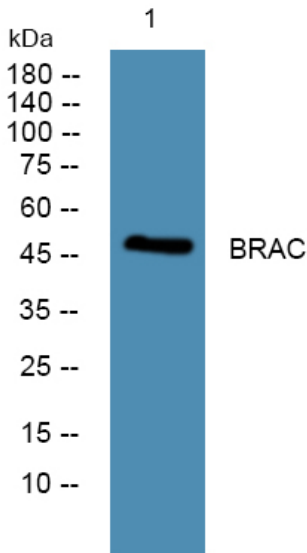
**matters needing attention**

Avoid repeated freezing and thawing!

**Usage suggestions**

This product can be used in immunological reaction related experiments. For more information, please consult technical personnel.

## Products Images



Western blot analysis of lysates from PC12 cells, primary antibody was diluted at 1:1000, 4° over night