



MSMB Polyclonal Antibody

Catalog No	BYab-06984
Isotype	IgG
Reactivity	Human;Rat;Mouse
Applications	WB;ELISA
Gene Name	MSMB PRSP
Protein Name	Beta-microseminoprotein (Immunoglobulin-binding factor) (IGBF) (PN44) (Prostate secreted seminal plasma protein) (Prostate secretory protein of 94 amino acids) (PSP-94) (PSP94) (Seminal plasma beta-in
Immunogen	Synthesized peptide derived from part region of human protein AA range: 61-110
Specificity	MSMB Polyclonal Antibody detects endogenous levels of protein.
Formulation	Liquid in PBS containing 50% glycerol, and 0.02% sodium azide.
Source	Polyclonal, Rabbit,IgG
Purification	The antibody was affinity-purified from rabbit antiserum by affinity-chromatography using epitope-specific immunogen.
Dilution	WB 1:500-2000 ELISA 1:5000-20000
Concentration	1 mg/ml
Purity	≥90%
Storage Stability	-20°C/1 year
Synonyms	
Observed Band	12kD
Cell Pathway	Secreted. Sperm surface.
Tissue Specificity	Strongly expressed in prostate, liver, kidney, breast and penis. Also expressed in pancreas, esophagus, stomach, deodenum, colon, trachea, lung, salivary glands and fallopian tube. PSP94 is expressed in lung and breast, whereas PSP57 is found in kidney and bladder.
Function	caution:Was originally thought to inhibit the secretion of FSH by pituitary cells.,disease:A genetic variation in MSMB is associated with susceptibility to hereditary prostate cancer type 13 (HPC13) [MIM:611928].,miscellaneous:Specific receptors for this protein are found on spermatozoa and in the prostate.,similarity:Belongs to the beta-microseminoprotein family.,subcellular location:Sperm surface.,subunit:Interacts with PI16.,tissue specificity:Strongly expressed in prostate, liver, kidney, breast and penis. Also expressed in pancreas, esophagus,

Nanjing BYabscience technology Co.,Ltd



stomach, deodenum, colon, trachea, lung, salivary glands and fallopian tube. PSP94 is expressed in lung and breast, whereas PSP57 is found in kidney and bladder.,

Background

The protein encoded by this gene is a member of the immunoglobulin binding factor family. It is synthesized by the epithelial cells of the prostate gland and secreted into the seminal plasma. This protein has inhibin-like activity. It may have a role as an autocrine paracrine factor in uterine, breast and other female reproductive tissues. The expression of the encoded protein is found to be decreased in prostate cancer. Two alternatively spliced transcript variants encoding different isoforms are described for this gene. The use of alternate polyadenylation sites has been found for this gene. [provided by RefSeq, Jul 2008],

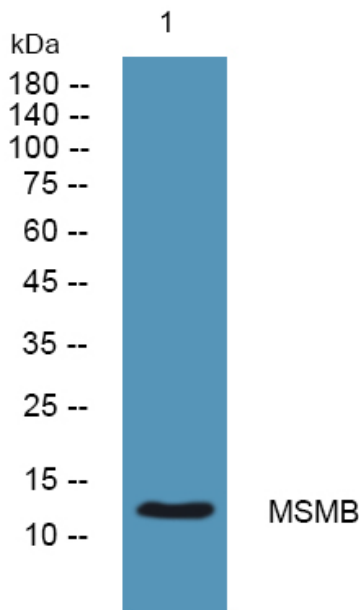
matters needing attention

Avoid repeated freezing and thawing!

Usage suggestions

This product can be used in immunological reaction related experiments. For more information, please consult technical personnel.

Products Images



Nanjing BYabscience technology Co.,Ltd