



# OSTCN Polyclonal Antibody

<b>Catalog No</b>	BYab-06975
<b>Isotype</b>	IgG
<b>Reactivity</b>	Human;Rat;Mouse
<b>Applications</b>	WB IF;ELISA
<b>Gene Name</b>	BGLAP
<b>Protein Name</b>	Osteocalcin (Bone Gla protein) (BGP) (Gamma-carboxyglutamic acid-containing protein)
<b>Immunogen</b>	Synthesized peptide derived from part region of human protein AA range: 31-80
<b>Specificity</b>	OSTCN Polyclonal Antibody detects endogenous levels of protein.
<b>Formulation</b>	Liquid in PBS containing 50% glycerol, and 0.02% sodium azide.
<b>Source</b>	Polyclonal, Rabbit,IgG
<b>Purification</b>	The antibody was affinity-purified from rabbit antiserum by affinity-chromatography using epitope-specific immunogen.
<b>Dilution</b>	WB 1:500-2000 IF 1:100-300 ELISA 1:5000-20000 Not yet tested in other applications.
<b>Concentration</b>	1 mg/ml
<b>Purity</b>	≥90%
<b>Storage Stability</b>	-20°C/1 year
<b>Synonyms</b>	
<b>Observed Band</b>	11kD
<b>Cell Pathway</b>	Secreted.
<b>Tissue Specificity</b>	Brain,Cerebellum,Colon,Lung carcinoma,Skin,Testis,Uterus,
<b>Function</b>	function:Constitutes 1-2% of the total bone protein. It binds strongly to apatite and calcium.,function:Part of the MIS12 complex which is required for normal chromosome alignment and segregation and kinetochore formation during mitosis. May act as a cotranscription partner of NFE2L2 involved in regulation of polyamine-induced transcription of SSAT.,induction:By polyamine analogs in analog-sensitive H157 cells.,online information:Osteocalcin entry,PTM:Gamma-carboxyglutamate residues are formed by vitamin K dependent carboxylation. These residues are essential for the binding of calcium.,similarity:Belongs to the osteocalcin/matrix Gla protein family.,similarity:Contains 1 Gla (gamma-carboxy-glutamate) domain.,subcellular location:Associated with the kinetochore.,subunit:Component of the MIS12

Nanjing BYabscience technology Co.,Ltd



complex composed of MIS12, DSN1, NSL1 and PMF1. Interacts with COPS7A. Interacts via its coiled-

**Background**

This gene encodes a highly abundant bone protein secreted by osteoblasts that regulates bone remodeling and energy metabolism. The encoded protein contains a Gla (gamma carboxyglutamate) domain, which functions in binding to calcium and hydroxyapatite, the mineral component of bone. Serum osteocalcin levels may be negatively correlated with metabolic syndrome. Read-through transcription exists between this gene and the neighboring upstream gene, PMF1 (polyamine-modulated factor 1), but the encoded protein only shows sequence identity with the upstream gene product. [provided by RefSeq, Jun 2015],

**matters needing attention**

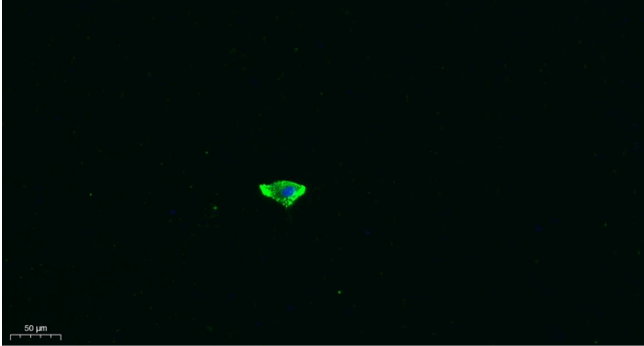
Avoid repeated freezing and thawing!

**Usage suggestions**

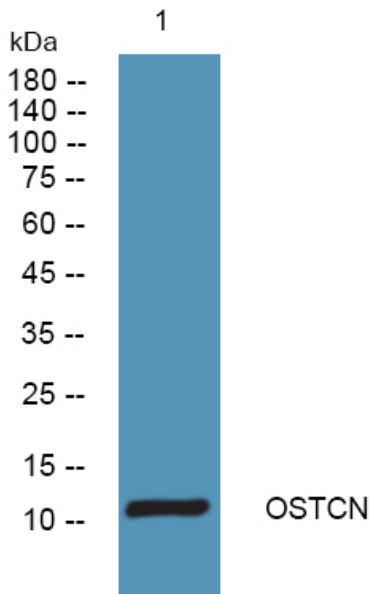
This product can be used in immunological reaction related experiments. For more information, please consult technical personnel.



## Products Images



Immunofluorescence analysis of A549. 1, primary Antibody was diluted at 1:200(4°C overnight). 2, Goat Anti Rabbit IgG (H&L) - Alexa Fluor 488 Secondary antibody was diluted at 1:1000(room temperature, 50min).3, Picture B: DAPI(blue) 10min.



Western blot analysis of lysates from KB cells, primary antibody was diluted at 1:1000, 4°over night