



MXRA5 Polyclonal Antibody

Catalog No	BYab-06965
Isotype	IgG
Reactivity	Human;Rat;Mouse;
Applications	IHC;IF
Gene Name	MXRA5
Protein Name	Matrix-remodeling-associated protein 5 (Adhesion protein with leucine-rich repeats and immunoglobulin domains related to perlecan) (Adlican)
Immunogen	Synthesized peptide derived from part region of human protein
Specificity	MXRA5 Polyclonal Antibody detects endogenous levels of protein.
Formulation	Liquid in PBS containing 50% glycerol, and 0.02% sodium azide.
Source	Polyclonal, Rabbit,IgG
Purification	The antibody was affinity-purified from rabbit antiserum by affinity-chromatography using epitope-specific immunogen.
Dilution	IHC-p 1:50-300. IF 1:50-200
Concentration	1 mg/ml
Purity	≥90%
Storage Stability	-20°C/1 year
Synonyms	
Observed Band	311kD
Cell Pathway	Secreted .
Tissue Specificity	Highly expressed in kidney, also detected on liver and spleen (PubMed:27599751). Expressed by proximal tubular cells of the kidney (at protein level) (PubMed:27599751). Expression highly increases during chronic kidney disease and autosomal dominant polycystic kidney disease, where is detected in cysts (PubMed:27599751).
Function	developmental stage:Over-expressed in centenarians. Expression is reduced from young to old but increased from old to centenarians.,sequence caution:Contaminating sequence. Potential poly-A sequence.,similarity:Contains 12 Ig-like C2-type (immunoglobulin-like) domains.,similarity:Contains 7 LRR (leucine-rich) repeats.,
Background	This gene encodes one of the matrix-remodelling associated proteins. This protein contains 7 leucine-rich repeats and 12 immunoglobulin-like C2-type domains related to perlecan. This gene has a pseudogene on chromosome Y.

Nanjing BYabscience technology Co.,Ltd



[provided by RefSeq, Mar 2010],

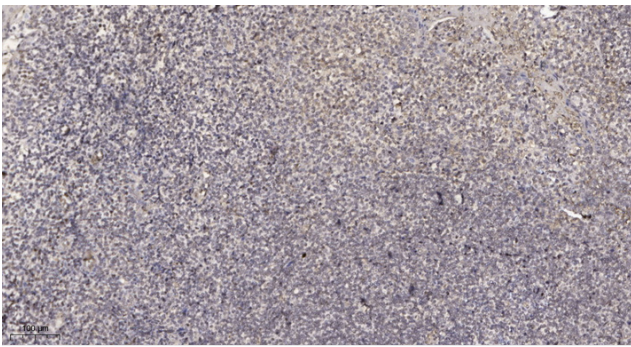
matters needing attention

Avoid repeated freezing and thawing!

Usage suggestions

This product can be used in immunological reaction related experiments. For more information, please consult technical personnel.

Products Images



Immunohistochemical analysis of paraffin-embedded human tonsil. 1, Antibody was diluted at 1:200(4° overnight). 2, Tris-EDTA,pH9.0 was used for antigen retrieval. 3,Secondary antibody was diluted at 1:200(room temperature, 30min).