



RASM Polyclonal Antibody

Catalog No	BYab-06962
Isotype	IgG
Reactivity	Human;Rat;Mouse
Applications	WB;ELISA
Gene Name	MRAS RRAS3
Protein Name	Ras-related protein M-Ras (Ras-related protein R-Ras3)
Immunogen	Synthesized peptide derived from part region of human protein
Specificity	RASM Polyclonal Antibody detects endogenous levels of protein.
Formulation	Liquid in PBS containing 50% glycerol, and 0.02% sodium azide.
Source	Polyclonal, Rabbit,IgG
Purification	The antibody was affinity-purified from rabbit antiserum by affinity-chromatography using epitope-specific immunogen.
Dilution	WB 1:500-2000 ELISA 1:5000-20000
Concentration	1 mg/ml
Purity	≥90%
Storage Stability	-20°C/1 year
Synonyms	
Observed Band	22kD
Cell Pathway	Cell membrane ; Lipid-anchor ; Cytoplasmic side .
Tissue Specificity	Expression highly restricted to the brain and heart.
Function	function:May serve as an important signal transducer for a novel upstream stimuli in controlling cell proliferation. Weakly activates the MAP kinase pathway.,induction:By interleukin-9, but not by IL-2 or IL-4.,similarity:Belongs to the small GTPase superfamily. Ras family.,subunit:Interacts with RGL3.,tissue specificity:Expression highly restricted to the brain and heart.,
Background	This gene encodes a member of the Ras family of small GTPases. These membrane-associated proteins function as signal transducers in multiple processes including cell growth and differentiation, and dysregulation of Ras signaling has been associated with many types of cancer. The encoded protein may play a role in the tumor necrosis factor-alpha and MAP kinase signaling pathways. Alternatively spliced transcript variants encoding multiple isoforms

Nanjing BYabscience technology Co.,Ltd



have been observed for this gene. [provided by RefSeq, Nov 2011],

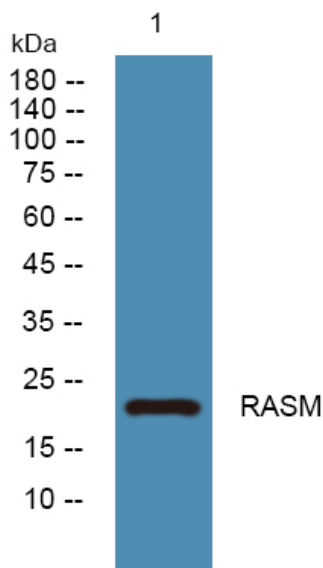
matters needing attention

Avoid repeated freezing and thawing!

Usage suggestions

This product can be used in immunological reaction related experiments. For more information, please consult technical personnel.

Products Images



Western blot analysis of lysates from Jarkat cells, primary antibody was diluted at 1:1000, 4° over night