



THIOM Polyclonal Antibody

Catalog No	BYab-06958
Isotype	IgG
Reactivity	Human;Mouse;Rat
Applications	WB;ELISA
Gene Name	TXN2 TRX2
Protein Name	Thioredoxin, mitochondrial (MTRX) (Mt-Trx) (Thioredoxin-2)
Immunogen	Synthesized peptide derived from part region of human protein
Specificity	THIOM Polyclonal Antibody detects endogenous levels of protein.
Formulation	Liquid in PBS containing 50% glycerol, and 0.02% sodium azide.
Source	Polyclonal, Rabbit,IgG
Purification	The antibody was affinity-purified from rabbit antiserum by affinity-chromatography using epitope-specific immunogen.
Dilution	WB 1:500-2000 ELISA 1:5000-20000
Concentration	1 mg/ml
Purity	≥90%
Storage Stability	-20°C/1 year
Synonyms	
Observed Band	18kD
Cell Pathway	Mitochondrion .
Tissue Specificity	Widely expressed in adult (at protein level) and fetal tissues.
Function	function:Has an anti-apoptotic function and plays an important role in the regulation of mitochondrial membrane potential. Could be involved in the resistance to anti-tumor agents. Possesses a dithiol-reducing activity.,similarity:Belongs to the thioredoxin family.,similarity:Contains 1 thioredoxin domain.,subunit:Monomer.,tissue specificity:Widely expressed in adult (at protein level) and fetal tissues.,
Background	This nuclear gene encodes a mitochondrial member of the thioredoxin family, a group of small multifunctional redox-active proteins. The encoded protein may play important roles in the regulation of the mitochondrial membrane potential and in protection against oxidant-induced apoptosis. [provided by RefSeq, Jul 2008],

Nanjing BYabscience technology Co.,Ltd



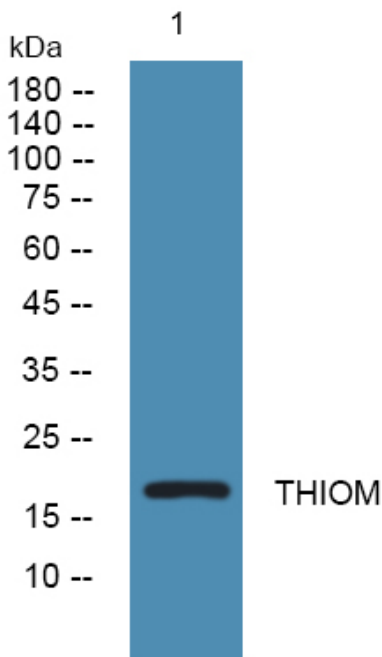
matters needing attention

Avoid repeated freezing and thawing!

Usage suggestions

This product can be used in immunological reaction related experiments. For more information, please consult technical personnel.

Products Images



Western blot analysis of lysates from SH-SY5Y cells, primary antibody was diluted at 1:1000, 4° over night