



GNLY Polyclonal Antibody

Catalog No	BYab-06951
Isotype	IgG
Reactivity	Human;Rat;Mouse;
Applications	WB;ELISA
Gene Name	GNLY LAG2 NKG5 TLA519
Protein Name	Granulysin (Lymphokine LAG-2) (Protein NKG5) (T-cell activation protein 519)
Immunogen	Synthesized peptide derived from part region of human protein
Specificity	GNLY Polyclonal Antibody detects endogenous levels of protein.
Formulation	Liquid in PBS containing 50% glycerol, and 0.02% sodium azide.
Source	Polyclonal, Rabbit,IgG
Purification	The antibody was affinity-purified from rabbit antiserum by affinity-chromatography using epitope-specific immunogen.
Dilution	WB 1:500-2000 ELISA 1:5000-20000
Concentration	1 mg/ml
Purity	≥90%
Storage Stability	-20°C/1 year
Synonyms	
Observed Band	15kD
Cell Pathway	Secreted. Located in the cytotoxic granules of T-cells, which are released upon antigen stimulation.
Tissue Specificity	Expressed in natural killer and T-cells.
Function	function:Antimicrobial protein that kills intracellular pathogens. Active against a broad range of microbes, including Gram-positive and Gram-negative bacteria, fungi, and parasites. Kills Mycobacterium tuberculosis.,induction:By T-cell growth factor and interleukin-2.,PTM:A 9 kDa form is produced by proteolytic processing of a 15 kDa protein.,similarity:Contains 1 saposin B-type domain.,subcellular location:Located in the cytotoxic granules of T-cells, which are released upon antigen stimulation.,tissue specificity:Expressed in natural killer and T-cells.,
Background	The product of this gene is a member of the saposin-like protein (SAPLIP) family and is located in the cytotoxic granules of T cells, which are released upon antigen stimulation. This protein is present in cytotoxic granules of cytotoxic T lymphocytes and natural killer cells, and it has antimicrobial activity against M.

Nanjing BYabscience technology Co.,Ltd



tuberculosis and other organisms. Alternatively spliced transcript variants encoding different isoforms have been identified. [provided by RefSeq, Jul 2008],

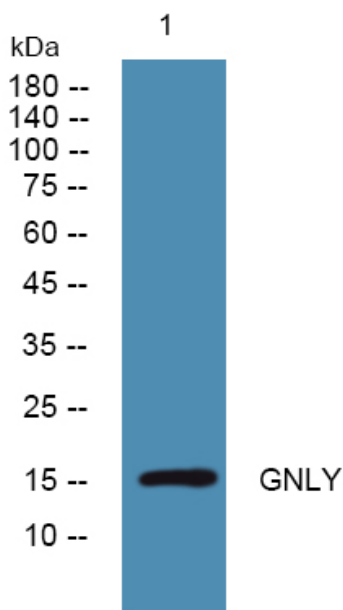
matters needing attention

Avoid repeated freezing and thawing!

Usage suggestions

This product can be used in immunological reaction related experiments. For more information, please consult technical personnel.

Products Images



Western blot analysis of lysates from HCT116 cells, primary antibody was diluted at 1:1000, 4°over night