



N2DL2 Polyclonal Antibody

Catalog No	BYab-06934
Isotype	IgG
Reactivity	Human;Rat;Mouse;
Applications	WB;ELISA
Gene Name	ULBP2 N2DL2 RAET1H UNQ463/PRO791
Protein Name	NKG2D ligand 2 (N2DL-2) (NKG2DL2) (ALCAN-alpha) (Retinoic acid early transcript 1H) (UL16-binding protein 2)
Immunogen	Synthesized peptide derived from part region of human protein
Specificity	N2DL2 Polyclonal Antibody detects endogenous levels of protein.
Formulation	Liquid in PBS containing 50% glycerol, and 0.02% sodium azide.
Source	Polyclonal, Rabbit,IgG
Purification	The antibody was affinity-purified from rabbit antiserum by affinity-chromatography using epitope-specific immunogen.
Dilution	WB 1:500-2000 ELISA 1:5000-20000
Concentration	1 mg/ml
Purity	≥90%
Storage Stability	-20°C/1 year
Synonyms	
Observed Band	27kD
Cell Pathway	Cell membrane ; Lipid-anchor, GPI-anchor . Endoplasmic reticulum . Secreted . In CMV-infected fibroblasts, detected in the endoplasmic reticulum/cis-Golgi. .
Tissue Specificity	Expressed in various types of cancer cell lines and in the fetus, but not in normal tissues.
Function	function:Ligand for the NKG2D receptor, together with at least ULBP1 and ULBP3. ULBPs activate multiple signaling pathways in primary NK cells, resulting in the production of cytokines and chemokines. Binding of ULBPs ligands to NKG2D induces calcium mobilization and activation of the JAK2, STAT5, ERK and PI3K kinase/Akt signal transduction pathway. In CMV infected cells, interacts with soluble CMV glycoprotein UL16. The interaction with UL16 blocked the interaction with the NKG2D receptor, providing a mechanism by which CMV infected cells might escape the immune system. UL16 also causes ULBP2 to be retained in the ER and cis-Golgi apparatus so that it does not reach the cell surface.,miscellaneous:The ULBPs are unusual members of the extended MHC class I superfamily, because they do not contain the alpha 3 domain and they lack

Nanjing BYabscience technology Co.,Ltd



a transmembrane domain. They are unlikely to present peptide

Background

This gene encodes a major histocompatibility complex (MHC) class I-related molecule that binds to the NKG2D receptor on natural killer (NK) cells to trigger release of multiple cytokines and chemokines that in turn contribute to the recruitment and activation of NK cells. The encoded protein undergoes further processing to generate the mature protein that is either anchored to membrane via a glycosylphosphatidylinositol moiety, or secreted. Many malignant cells secrete the encoded protein to evade immunosurveillance by NK cells. This gene is located in a cluster of multiple MHC class I-related genes on chromosome 6. [provided by RefSeq, Jul 2015],

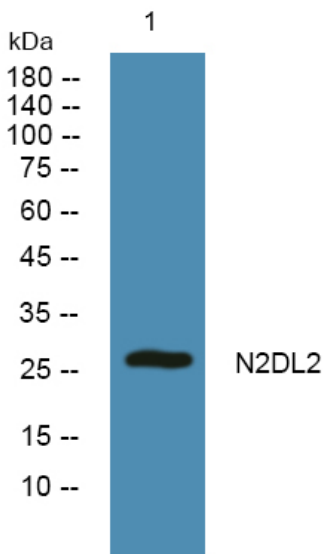
matters needing attention

Avoid repeated freezing and thawing!

Usage suggestions

This product can be used in immunological reaction related experiments. For more information, please consult technical personnel.

Products Images



Western blot analysis of lysates from SW480 cells, primary antibody was diluted at 1:1000, 4° over night