



DPPA5 Polyclonal Antibody

Catalog No	BYab-06925
Isotype	IgG
Reactivity	Human;Rat;Mouse;
Applications	WB;ELISA
Gene Name	DPPA5 ESG1
Protein Name	Developmental pluripotency-associated 5 protein (hDPPA5) (Embryonal stem cell-specific gene 1 protein) (ESG-1)
Immunogen	Synthesized peptide derived from part region of human protein AA range: 1-50
Specificity	DPPA5 Polyclonal Antibody detects endogenous levels of protein.
Formulation	Liquid in PBS containing 50% glycerol, and 0.02% sodium azide.
Source	Polyclonal, Rabbit,IgG
Purification	The antibody was affinity-purified from rabbit antiserum by affinity-chromatography using epitope-specific immunogen.
Dilution	WB 1:500-2000 ELISA 1:5000-20000
Concentration	1 mg/ml
Purity	≥90%
Storage Stability	-20°C/1 year
Synonyms	
Observed Band	12kD
Cell Pathway	Cytoplasm .
Tissue Specificity	
Function	developmental stage:Expressed in primordial germ (PGC), embryonic germ (EGC) and embryonic stem (ESC) cells. Not detected in embryonic carcinoma (ECC) cells.,function:Involved in the maintenance of embryonic stem (ES) cell pluripotency. Dispensable for self-renewal of pluripotent ES cells and establishment of germ cells. Associates with specific target mRNAs.,induction:Down-regulated in differentiated embryonic stem (ESC) cells, compared with strong expression in undifferentiated ESC cells.,similarity:Belongs to the KHDC1 family.,similarity:Contains 1 KH domain.,
Background	This gene encodes a protein that may function in the control of cell pluripotency and early embryogenesis. Expression of this gene is a specific marker for pluripotent stem cells. Pseudogenes of this gene are located on the short arm of

Nanjing BYabscience technology Co.,Ltd



chromosome 10 and the long arm of chromosomes 14 and 19. [provided by RefSeq, Dec 2010],

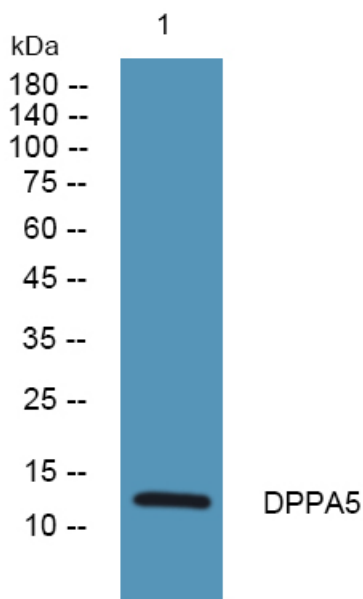
matters needing attention

Avoid repeated freezing and thawing!

Usage suggestions

This product can be used in immunological reaction related experiments. For more information, please consult technical personnel.

Products Images



Western blot analysis of lysates from Jarkat cells, primary antibody was diluted at 1:1000, 4°over night