



# CATS Polyclonal Antibody

<b>Catalog No</b>	BYab-06923
<b>Isotype</b>	IgG
<b>Reactivity</b>	Human;Rat;Mouse
<b>Applications</b>	WB;ELISA
<b>Gene Name</b>	CTSS
<b>Protein Name</b>	Cathepsin S (EC 3.4.22.27)
<b>Immunogen</b>	Synthesized peptide derived from part region of human protein
<b>Specificity</b>	CATS Polyclonal Antibody detects endogenous levels of protein.
<b>Formulation</b>	Liquid in PBS containing 50% glycerol, and 0.02% sodium azide.
<b>Source</b>	Polyclonal, Rabbit,IgG
<b>Purification</b>	The antibody was affinity-purified from rabbit antiserum by affinity-chromatography using epitope-specific immunogen.
<b>Dilution</b>	WB 1:500-2000 ELISA 1:5000-20000
<b>Concentration</b>	1 mg/ml
<b>Purity</b>	≥90%
<b>Storage Stability</b>	-20°C/1 year
<b>Synonyms</b>	
<b>Observed Band</b>	36kD
<b>Cell Pathway</b>	Lysosome . Secreted . Cytoplasmic vesicle, phagosome .
<b>Tissue Specificity</b>	Alveolar macrophage,Pancreas,Testis,
<b>Function</b>	catalytic activity:Similar to cathepsin L, but with much less activity on Z-Phe-Arg- -NHMeC, and more activity on the Z-Val-Val-Arg- -Xaa compound.,function:Thiol protease. Key protease responsible for the removal of the invariant chain from MHC class II molecules. The bond-specificity of this proteinase is in part similar to the specificities of cathepsin L and cathepsin N.,similarity:Belongs to the peptidase C1 family.,subunit:Monomer.,
<b>Background</b>	The protein encoded by this gene, a member of the peptidase C1 family, is a lysosomal cysteine proteinase that may participate in the degradation of antigenic proteins to peptides for presentation on MHC class II molecules. The encoded protein can function as an elastase over a broad pH range in alveolar macrophages. Alternatively spliced transcript variants encoding distinct isoforms

Nanjing BYabscience technology Co.,Ltd



have been found for this gene. [provided by RefSeq, Dec 2010],

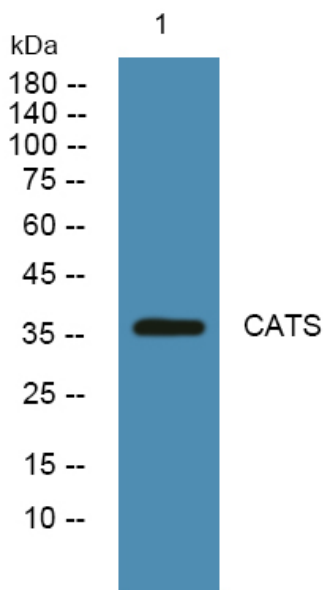
**matters needing attention**

Avoid repeated freezing and thawing!

**Usage suggestions**

This product can be used in immunological reaction related experiments. For more information, please consult technical personnel.

## Products Images



Western blot analysis of lysates from HCT116 cells, primary antibody was diluted at 1:1000, 4° over night