



CBPA2 Polyclonal Antibody

Catalog No	BYab-06920
Isotype	IgG
Reactivity	Human;Rat;Mouse
Applications	WB;ELISA
Gene Name	CPA2
Protein Name	Carboxypeptidase A2 (EC 3.4.17.15)
Immunogen	Synthesized peptide derived from part region of human protein
Specificity	CBPA2 Polyclonal Antibody detects endogenous levels of protein.
Formulation	Liquid in PBS containing 50% glycerol, and 0.02% sodium azide.
Source	Polyclonal, Rabbit,IgG
Purification	The antibody was affinity-purified from rabbit antiserum by affinity-chromatography using epitope-specific immunogen.
Dilution	WB 1:500-2000 ELISA 1:5000-20000
Concentration	1 mg/ml
Purity	≥90%
Storage Stability	-20°C/1 year
Synonyms	
Observed Band	46kD
Cell Pathway	Secreted.
Tissue Specificity	Brain,Pancreas,
Function	catalytic activity:Similar to that of carboxypeptidase A (EC 3.4.17.1), but with a preference for bulkier C-terminal residues.,cofactor:Binds 1 zinc ion per subunit.,similarity:Belongs to the peptidase M14 family.,
Background	Three different forms of human pancreatic procarboxypeptidase A have been isolated. The encoded protein represents the A2 form, which is a monomeric protein with different biochemical properties from the A1 and A3 forms. The A2 form of pancreatic procarboxypeptidase acts on aromatic C-terminal residues and is a secreted protein. [provided by RefSeq, Dec 2008],
matters needing attention	Avoid repeated freezing and thawing!

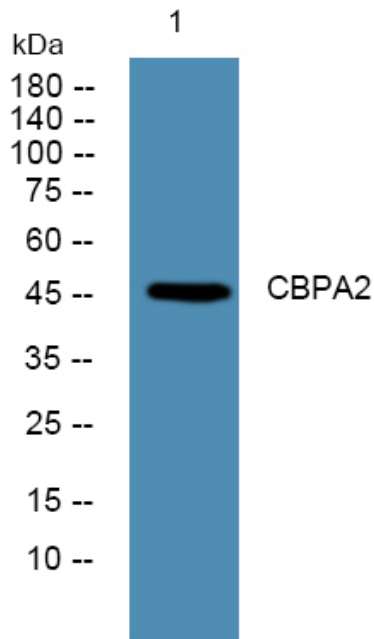
Nanjing BYabscience technology Co.,Ltd



Usage suggestions

This product can be used in immunological reaction related experiments. For more information, please consult technical personnel.

Products Images



Western blot analysis of lysates from DU145 cells, primary antibody was diluted at 1:1000, 4° over night