



FCN2 Polyclonal Antibody

| | |
|---------------------------|---|
| Catalog No | BYab-06887 |
| Isotype | IgG |
| Reactivity | Human;Rat;Mouse |
| Applications | WB;ELISA |
| Gene Name | FCN2 FCNL |
| Protein Name | Ficolin-2 (37 kDa elastin-binding protein) (Collagen/fibrinogen domain-containing protein 2) (EBP-37) (Ficolin-B) (Ficolin-beta) (Hucolin) (L-ficolin) (Serum lectin p35) |
| Immunogen | Synthesized peptide derived from part region of human protein AA range: 41-90 |
| Specificity | FCN2 Polyclonal Antibody detects endogenous levels of protein. |
| Formulation | Liquid in PBS containing 50% glycerol, and 0.02% sodium azide. |
| Source | Polyclonal, Rabbit,IgG |
| Purification | The antibody was affinity-purified from rabbit antiserum by affinity-chromatography using epitope-specific immunogen. |
| Dilution | WB 1:500-2000 ELISA 1:5000-20000 |
| Concentration | 1 mg/ml |
| Purity | ≥90% |
| Storage Stability | -20°C/1 year |
| Synonyms | |
| Observed Band | 34kD |
| Cell Pathway | Secreted. |
| Tissue Specificity | Expressed by the liver and secreted in plasma. |
| Function | domain:The fibrinogen-like domain (FBG) contains potential calcium-binding sites that may be involved in carbohydrate binding.,function:May function in innate immunity through activation of the lectin complement pathway. Calcium-dependent and GlcNAc-binding lectin. Enhances phagocytosis of S.typhimurium by neutrophils, suggesting an opsonic effect via the collagen region.,similarity:Belongs to the ficolin lectin family.,similarity:Contains 1 collagen-like domain.,similarity:Contains 1 fibrinogen C-terminal domain.,subunit:Homopolymer; disulfide-linked. Interacts with MASP1 and MASP2.,tissue specificity:Expressed by the liver and secreted in plasma., |

Nanjing BYabscience technology Co.,Ltd



Background

ficolin 2(FCN2) Homo sapiens The product of this gene belongs to the ficolin family of proteins. This family is characterized by the presence of a leader peptide, a short N-terminal segment, followed by a collagen-like region, and a C-terminal fibrinogen-like domain. This gene is predominantly expressed in the liver, and has been shown to have carbohydrate binding and opsonic activities. Alternatively spliced transcript variants encoding different isoforms have been identified. [provided by RefSeq, Jul 2008],

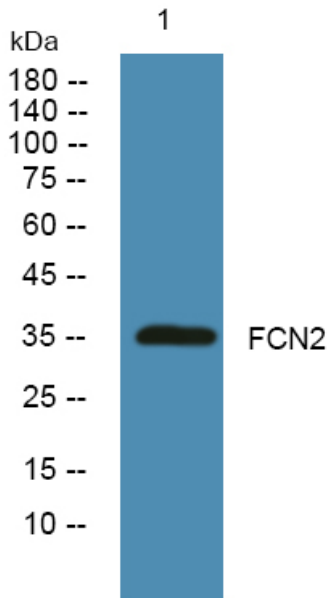
matters needing attention

Avoid repeated freezing and thawing!

Usage suggestions

This product can be used in immunological reaction related experiments. For more information, please consult technical personnel.

Products Images



Western blot analysis of lysates from A431 cells, primary antibody was diluted at 1:1000, 4° over night