



XG Polyclonal Antibody

Catalog No	BYab-06879
Isotype	IgG
Reactivity	Human;Rat;Mouse;
Applications	WB;ELISA
Gene Name	XG PBDX
Protein Name	Glycoprotein Xg (Protein PBDX)
Immunogen	Synthesized peptide derived from part region of human protein
Specificity	XG Polyclonal Antibody detects endogenous levels of protein.
Formulation	Liquid in PBS containing 50% glycerol, and 0.02% sodium azide.
Source	Polyclonal, Rabbit,IgG
Purification	The antibody was affinity-purified from rabbit antiserum by affinity-chromatography using epitope-specific immunogen.
Dilution	WB 1:500-2000 ELISA 1:5000-20000
Concentration	1 mg/ml
Purity	≥90%
Storage Stability	-20°C/1 year
Synonyms	
Observed Band	19kD
Cell Pathway	Cell membrane ; Single-pass type I membrane protein .
Tissue Specificity	Expressed in erythroid tissues, including thymus, bone marrow and fetal liver, and in several nonerythroid tissues, such as heart, placenta, skeletal muscle, thyroid and trachea, as well as in skin fibroblasts. Expression is low or undetectable in other tissues.
Function	caution:Ref.3 sequence incorrectly indicated as originating from mouse.,miscellaneous:The gene encoding for this protein is located in the pseudoautosomal region 1 (PAR1) of X and Y chromosomes.,online information:Blood group antigen gene mutation database,polymorphism:XG is responsible for the Xg blood group system.,PTM:O-glycosylated.,similarity:Belongs to the CD99 family.,
Background	This gene encodes the XG blood group antigen, and is located at the pseudoautosomal boundary on the short (p) arm of chromosome X. The three 5' exons reside in the pseudoautosomal region and the remaining exons

Nanjing BYabscience technology Co.,Ltd



within the X-specific end. A truncated copy of this gene is found on the Y chromosome at the pseudoautosomal boundary. It is transcribed, but not expected to make a Y-chromosome specific gene product. Alternatively spliced transcript variants encoding different isoforms have been found for this gene. [provided by RefSeq, Nov 2008],

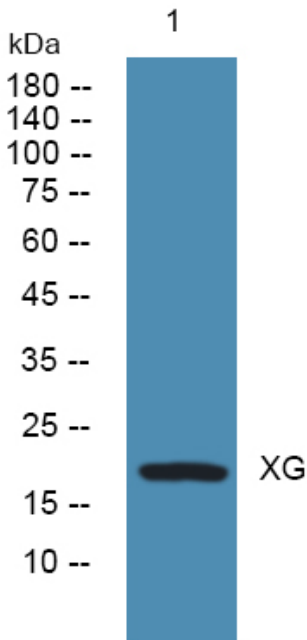
matters needing attention

Avoid repeated freezing and thawing!

Usage suggestions

This product can be used in immunological reaction related experiments. For more information, please consult technical personnel.

Products Images



Western blot analysis of lysates from KB cells, primary antibody was diluted at 1:1000, 4° over night