



# CDO1 Polyclonal Antibody

<b>Catalog No</b>	BYab-06867
<b>Isotype</b>	IgG
<b>Reactivity</b>	Human;Mouse;Rat
<b>Applications</b>	WB;ELISA
<b>Gene Name</b>	CDO1
<b>Protein Name</b>	Cysteine dioxygenase type 1 (EC 1.13.11.20) (Cysteine dioxygenase type I) (CDO) (CDO-I)
<b>Immunogen</b>	Synthesized peptide derived from part region of human protein
<b>Specificity</b>	CDO1 Polyclonal Antibody detects endogenous levels of protein.
<b>Formulation</b>	Liquid in PBS containing 50% glycerol, and 0.02% sodium azide.
<b>Source</b>	Polyclonal, Rabbit,IgG
<b>Purification</b>	The antibody was affinity-purified from rabbit antiserum by affinity-chromatography using epitope-specific immunogen.
<b>Dilution</b>	WB 1:500-2000 ELISA 1:5000-20000
<b>Concentration</b>	1 mg/ml
<b>Purity</b>	≥90%
<b>Storage Stability</b>	-20°C/1 year
<b>Synonyms</b>	
<b>Observed Band</b>	27kD
<b>Cell Pathway</b>	cytosol,
<b>Tissue Specificity</b>	Highly expressed in liver and placenta. Low expression in heart, brain and pancreas. Also detected in hepatoblastoma Hep-G2 cells.
<b>Function</b>	catalytic activity:L-cysteine + O(2) = 3-sulfinoalanine.,cofactor:Binds 1 iron ion per subunit. Zinc to a much lesser extent.,cofactor:IRON; NAD(P)H.,function:Initiates several important metabolic pathways related to pyruvate and several sulfurate compounds including sulfate, hypotaurine and taurine. Critical regulator of cellular cysteine concentrations. Has an important role in maintaining the hepatic concentration of intracellular free cysteine within a proper narrow range.,induction:In hepatoblastoma HepG2 cells, down-regulated by phorbol 12-myristate 13-acetate.,pathway:Organosulfur biosynthesis; taurine biosynthesis; hypotaurine from L-cysteine: step 1/2.,PTM:The thioether cross-link between Cys-93 and Tyr-157 plays a structural role through stabilizing the Fe(2+) ion, and prevents the production of highly damaging free hydroxyl radicals by

Nanjing BYabscience technology Co.,Ltd



holding the oxygen radical via hydroxyl hy

**Background**

catalytic activity:L-cysteine + O(2) = 3-sulfinoalanine.,cofactor: Binds 1 iron ion per subunit. Zinc to a much lesser extent.,cofactor: IRON; NAD(P)H.,function: Initiates several important metabolic pathways related to pyruvate and several sulfurate compounds including sulfate, hypotaurine and taurine. Critical regulator of cellular cysteine concentrations. Has an important role in maintaining the hepatic concentration of intracellular free cysteine within a proper narrow range.,induction: In hepatoblastoma HepG2 cells, down-regulated by phorbol 12-myristate 13-acetate.,pathway: Organosulfur biosynthesis; taurine biosynthesis; hypotaurine from L-cysteine: step 1/2.,PTM: The thioether cross-link between Cys-93 and Tyr-157 plays a structural role through stabilizing the Fe(2+) ion, and prevents the production of highly damaging free hydroxyl radicals by holding the oxygen radical via hydroxyl hydrogen.,similarity: Belongs to the cysteine dioxygenase family.,subunit: Monomer.,tissue specificity: Highly expressed in liver and placenta. Low expression in heart, brain and pancreas. Also detected in hepatoblastoma HepG2 cells.,

**matters needing attention**

Avoid repeated freezing and thawing!

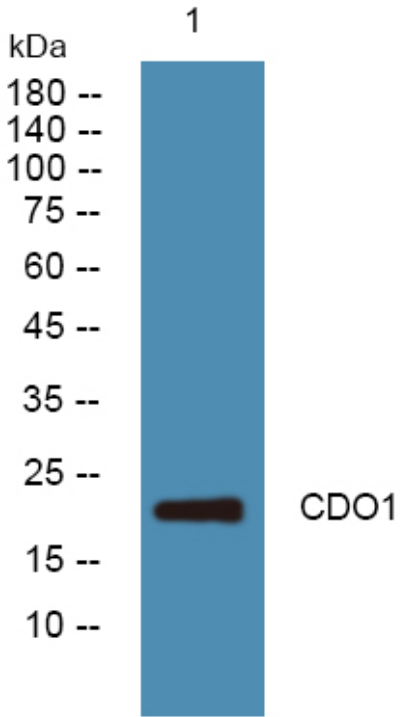
**Usage suggestions**

This product can be used in immunological reaction related experiments. For more information, please consult technical personnel.

Nanjing BYabscience technology Co.,Ltd



## Products Images



Western blot analysis of lysates from DU145 cells, primary antibody was diluted at 1:1000, 4° over night