



OPT Polyclonal Antibody

Catalog No	BYab-06830
Isotype	IgG
Reactivity	Human;Rat;Mouse;
Applications	WB;ELISA
Gene Name	OPTC OPT
Protein Name	Opticin (Oculoglycan)
Immunogen	Synthesized peptide derived from part region of human protein
Specificity	OPT Polyclonal Antibody detects endogenous levels of protein.
Formulation	Liquid in PBS containing 50% glycerol, and 0.02% sodium azide.
Source	Polyclonal, Rabbit,IgG
Purification	The antibody was affinity-purified from rabbit antiserum by affinity-chromatography using epitope-specific immunogen.
Dilution	WB 1:500-2000 ELISA 1:5000-20000
Concentration	1 mg/ml
Purity	≥90%
Storage Stability	-20°C/1 year
Synonyms	
Observed Band	36kD
Cell Pathway	Secreted, extracellular space, extracellular matrix .
Tissue Specificity	Expressed in cartilage and synovial membranes (at protein level) (PubMed:18164633, PubMed:23845380). Expressed in the retina, iris, ligament, skin and fetal liver (at protein level) (PubMed:12019215, PubMed:25136834). Expressed in the retinal pigment epithelium (at protein level) (PubMed:25136834). Expressed in synovial fibroblasts and subchondral bone osteoblasts (PubMed:18164633).
Function	function: Binds collagen fibrils.,PTM:O-glycosylated.,similarity:Belongs to the small leucine-rich proteoglycan (SLRP) family. Class III subfamily.,similarity:Contains 7 LRR (leucine-rich) repeats.,tissue specificity:Retina, iris, ligament, skin and fetal liver.,
Background	Opticin belongs to class III of the small leucine-rich repeat protein (SLRP) family. Members of this family are typically associated with the extracellular matrix. Opticin is present in significant quantities in the vitreous of the eye and also

Nanjing BYabscience technology Co.,Ltd



localizes to the cornea, iris, ciliary body, optic nerve, choroid, retina, and fetal liver. Opticin may noncovalently bind collagen fibrils and regulate fibril morphology, spacing, and organization. The opticin gene is mapped to a region of chromosome 1 that is associated with the inherited eye diseases age-related macular degeneration (AMD) and posterior column ataxia with retinosa pigmentosa (AXPC1). [provided by RefSeq, Jul 2008],

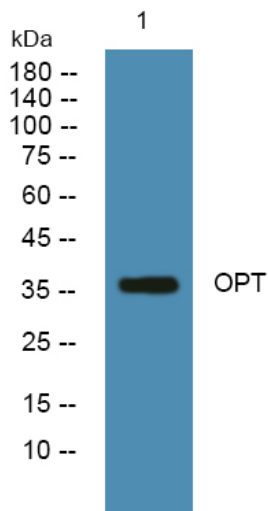
matters needing attention

Avoid repeated freezing and thawing!

Usage suggestions

This product can be used in immunological reaction related experiments. For more information, please consult technical personnel.

Products Images



Western blot analysis of lysates from PC12 cells, primary antibody was diluted at 1:1000, 4° over night