



FAM3B Polyclonal Antibody

Catalog No	BYab-06827
Isotype	IgG
Reactivity	Human;Mouse
Applications	WB;ELISA
Gene Name	FAM3B C21orf11 C21orf76 PRED44 UNQ320/PRO365
Protein Name	Protein FAM3B (Cytokine-like protein 2-21) (Pancreatic-derived factor) (PANDER)
Immunogen	Synthesized peptide derived from part region of human protein AA range: 21-70
Specificity	FAM3B Polyclonal Antibody detects endogenous levels of protein.
Formulation	Liquid in PBS containing 50% glycerol, and 0.02% sodium azide.
Source	Polyclonal, Rabbit,IgG
Purification	The antibody was affinity-purified from rabbit antiserum by affinity-chromatography using epitope-specific immunogen.
Dilution	WB 1:500-2000 ELISA 1:5000-20000
Concentration	1 mg/ml
Purity	≥90%
Storage Stability	-20°C/1 year
Synonyms	
Observed Band	25kD
Cell Pathway	Secreted. Present in insulin secretory granules and likely cosecreted with insulin. Localized in discrete vesicular and perinuclear structure.
Tissue Specificity	Highly expressed in the pancreas. Also found in the colon, kidney, prostate, small intestine and testis.
Function	function:Has delayed effects on beta-cell function, inhibiting basal insulin secretion from a beta-cell line in a dose-dependent manner.,miscellaneous:2 N-termini have been observed in the mature protein: the first at Glu-30, resulting from signal peptide cleavage, the second at Ser-46.,similarity:Belongs to the FAM3 family.,subcellular location:Localized in discrete vesicular and perinuclear structure.,tissue specificity:Highly expressed in the pancreas. Also found in the colon, kidney, prostate, small intestine and testis.,
Background	function:Has delayed effects on beta-cell function, inhibiting basal insulin secretion from a beta-cell line in a dose-dependent manner.,miscellaneous:2 N-termini have been observed in the mature protein: the first at Glu-30, resulting from signal peptide cleavage, the second at Ser-46.,similarity:Belongs to the

Nanjing BYabscience technology Co.,Ltd



FAM3 family.,subcellular location:Localized in discrete vesicular and perinuclear structure.,tissue specificity:Highly expressed in the pancreas. Also found in the colon, kidney, prostate, small intestine and testis.,

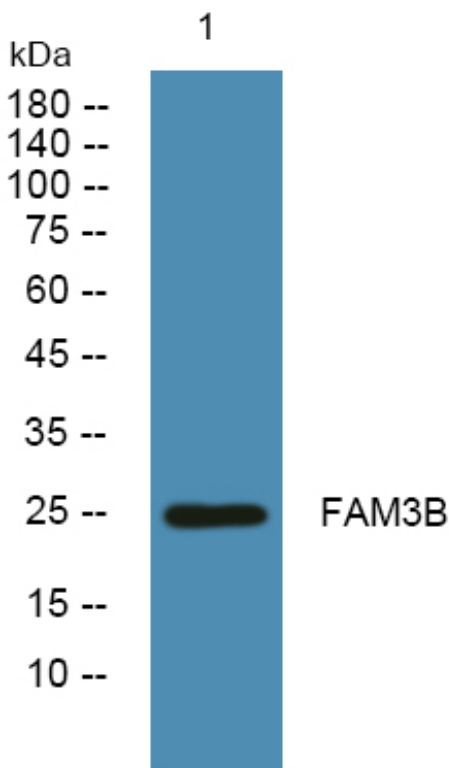
matters needing attention

Avoid repeated freezing and thawing!

Usage suggestions

This product can be used in immunological reaction related experiments. For more information, please consult technical personnel.

Products Images



Western blot analysis of lysates from KB cells, primary antibody was diluted at 1:1000, 4°over night