



UTF1 Polyclonal Antibody

Catalog No	BYab-06807
Isotype	IgG
Reactivity	Human;Mouse
Applications	WB;ELISA
Gene Name	UTF1
Protein Name	Undifferentiated embryonic cell transcription factor 1
Immunogen	Synthesized peptide derived from part region of human protein
Specificity	UTF1 Polyclonal Antibody detects endogenous levels of protein.
Formulation	Liquid in PBS containing 50% glycerol, and 0.02% sodium azide.
Source	Polyclonal, Rabbit,IgG
Purification	The antibody was affinity-purified from rabbit antiserum by affinity-chromatography using epitope-specific immunogen.
Dilution	WB 1:500-2000 ELISA 1:5000-20000
Concentration	1 mg/ml
Purity	≥90%
Storage Stability	-20°C/1 year
Synonyms	
Observed Band	37kD
Cell Pathway	Nucleus .
Tissue Specificity	Teratocarcinoma,
Function	domain:The leucine-zipper domain is required for coactivation activity. When this domain is deleted, the protein is able to stimulate transcription from a number of gene promoters.,function:Acts as a transcriptional coactivator of ATF2.,PTM:Phosphorylated.,subunit:Binds to the N-terminal region of ATF2. Associates with the TFIID complex through interaction with TBP.,
Background	The protein encoded by this gene is a leucine zipper-containing transcriptional coactivator that may link the upstream activator ATF2 with the basal transcription complex. The encoded protein is closely associated with chromatin and is required for the proper differentiation of embryonic carcinoma and embryonic stem cells. Found nearly exclusively in pluripotent cells, this protein can also serve as a transcriptional repressor. [provided by RefSeq, Nov 2015],

Nanjing BYabscience technology Co.,Ltd



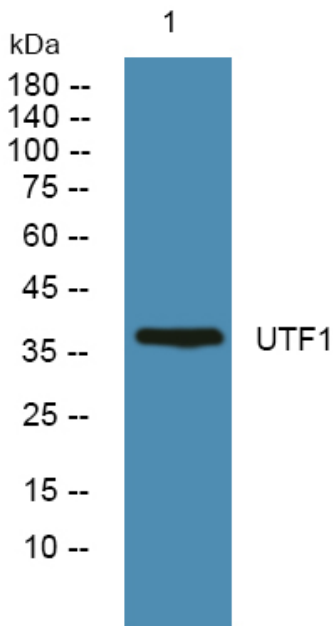
matters needing attention

Avoid repeated freezing and thawing!

Usage suggestions

This product can be used in immunological reaction related experiments. For more information, please consult technical personnel.

Products Images



Western blot analysis of lysates from SW480 cells, primary antibody was diluted at 1:1000, 4° over night