



SOX1 Polyclonal Antibody

Catalog No	BYab-06799
Isotype	IgG
Reactivity	Human;Mouse
Applications	WB;ELISA
Gene Name	SOX1
Protein Name	Transcription factor SOX-1
Immunogen	Synthesized peptide derived from part region of human protein
Specificity	SOX1 Polyclonal Antibody detects endogenous levels of protein.
Formulation	Liquid in PBS containing 50% glycerol, and 0.02% sodium azide.
Source	Polyclonal, Rabbit,IgG
Purification	The antibody was affinity-purified from rabbit antiserum by affinity-chromatography using epitope-specific immunogen.
Dilution	WB 1:500-2000 ELISA 1:5000-20000
Concentration	1 mg/ml
Purity	≥90%
Storage Stability	-20°C/1 year
Synonyms	
Observed Band	43kD
Cell Pathway	Nucleus .
Tissue Specificity	Mainly expressed in the developing central nervous system.
Function	function:Transcriptional activator.,similarity:Contains 1 HMG box DNA-binding domain.,tissue specificity:Mainly in the developing central nervous system.,
Background	SRY-box 1(SOX1) Homo sapiens This intronless gene encodes a member of the SOX (SRY-related HMG-box) family of transcription factors involved in the regulation of embryonic development and in the determination of the cell fate. The encoded protein may act as a transcriptional activator after forming a protein complex with other proteins. In mice, a similar protein regulates the gamma-crystallin genes and is essential for lens development. [provided by RefSeq, Jul 2008],

Nanjing BYabscience technology Co.,Ltd



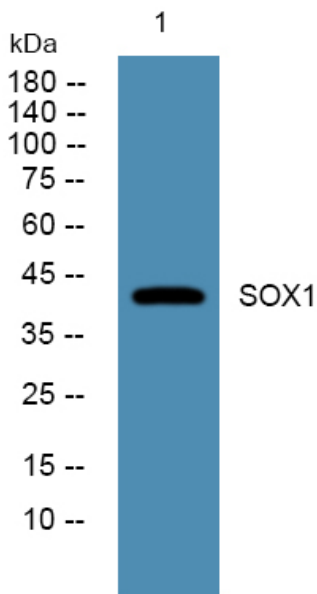
matters needing attention

Avoid repeated freezing and thawing!

Usage suggestions

This product can be used in immunological reaction related experiments. For more information, please consult technical personnel.

Products Images



Western blot analysis of lysates from SW480 cells, primary antibody was diluted at 1:1000, 4° over night